



nwea Professional Learning

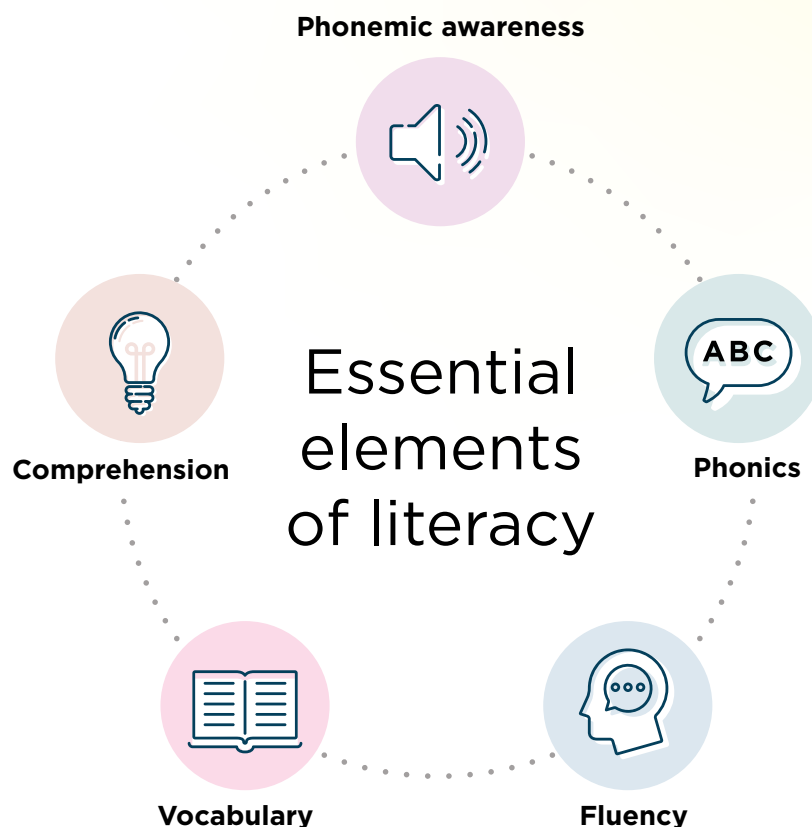
Science of reading literacy suite

Content-focused professional learning

Build and support reading fluency with the NWEA Science of reading professional learning suite

Learn the essentials

The science of reading is the converging evidence of what matters and what works in literacy instruction, organized around models that describe how and why reading instruction works. Our literacy professional learning offerings are aligned to the International Dyslexia Association's Knowledge and Practice Standards. These evidence-aligned literacy offerings are designed to answer the question: "What do I do in the classroom tomorrow?"



$$RC = WR \times LC$$

Reading comprehension (RC) is the product of word recognition (WR) and language comprehension (LC)

Depend on the research

Our professional learning draws from the deep base of science of reading research. From the findings of the National Reading Panel Report (2000)—which have been reconfirmed over the last twenty years—right up to today’s studies, educators can be assured that each professional learning experience is backed by evidence. Every workshop is content-focused and driven by three promises, ensuring educators will leave with the tools to be successful:

Practical professional learning that:

Translates scientific evidence into practical classroom applications

Integrates efficient and explicit instructional routines

Delivers practical tools and resources to sustain educators

Learning outcomes

Educators will gain an understanding of the science behind teaching early and advanced word recognition, reading fluency, vocabulary and morphology, and writing. This professional learning suite incorporates evidence on how to most effectively support learners based on their unique academic, cultural, and linguistic characteristics.

The workshops are developed with an asset-based approach that recognizes and honors the rich funds of knowledge students bring to the classroom. Our design supports educators as they implement high-quality literacy practices within the unique context of their location, school size, the dialects and languages of the populations they serve, and locally adopted curricula and assessments.



Research suggests that over 90% of children could learn to read if their teachers used instructional methods grounded in the science of reading.”

National Council of Teacher Quality

NWEA Science of reading professional learning pathway

These workshops empower educators to shift to practices grounded in the science of teaching reading. Workshop participants will learn effective and efficient routines for teaching word recognition and comprehension alongside any adopted curriculum, as well as practical resources to use in their classroom tomorrow.

WORKSHOP	TIME (HOURS)	DESCRIPTION
Early word recognition	6	Focus on routines for phonemic awareness, phonics, and connected text
Instructional coaching	6	
Advanced word recognition	6	Explore multisyllabic word reading through instruction in mispronunciation correction, morphology, and flexible decoding strategies
Instructional coaching	6	
Foundations of writing	3	Develop young writers through practical writing routines and evidence-aligned instructional activities
Instructional coaching	3	
Building fluent readers	6	Improve student fluency with letter sounds, word reading, passage reading, and comprehending complex texts
Instructional coaching	6	
Improving vocabulary and morphological knowledge	6	Empower students through routines for vocabulary and morphology
Instructional coaching	6	

Note: All instructional coaching sessions provide on-demand implementation support for each workshop to empower teachers and leaders to transform practices.

Delivery options tailored to meet your needs



Onsite learning

Face-to-face sessions with a consultant



Virtual learning

Live online instruction

Science of reading professional learning workshops (On-site or virtual)

K-5: Early word recognition (6h)

Focus on routines for phonemic awareness, phonics, and connected text.

Educators will deepen their practice in early literacy instruction aligned to the science of reading. Participants will zoom in on the building blocks of word recognition (Tunmer & Hoover, 2019), gaining a deep understanding of the science behind phonemic awareness and phonics instruction (Brady, 2020; Gonzalez-Frey & Ehri, 2021; Ehri, 2020, 2022). Educators will learn efficient and explicit routines to deliver early word recognition instruction that can be aligned to their locally adopted scope and sequence. Topics include introducing new grapheme-phoneme correspondences; decoding and spelling phonetically regular, temporarily irregular, and permanently irregular words (Honig et al., 2018; Miles et al., 2018); exploring text types; establishing small-group reading routines for decodable texts; and using formative assessment of student writing samples to inform instruction.

K-5: Advanced word recognition (6h)

Explore multisyllabic word reading through instruction in mispronunciation correction, morphology, and flexible decoding strategies.

Participants will extend the work from *K-5: Early word recognition* to now include multisyllabic word decoding, morphology, and graphosyllabic analysis (Bhattacharya & Ehri, 2004). Educators will learn part-by-part and flexible decoding strategies (Archer et al., 2003) for teaching students to read long words (Vadasy et al., 2006), understand how set for variability plays a role in reading (Tunmer & Chapman, 2012), and discover how morphology can help students decode and comprehend text (Rastle, 2019). Finally, educators will explore how data-based decision-making can improve advanced word reading for all students (Filderman & Toste, 2021). Efficient instructional routines for each of these science-backed techniques will be practiced.



K-8: Foundations of writing (3h)

Develop young writers through practical writing routines and evidence-aligned instructional activities.

Developing young writers is an essential component of providing equitable and excellent literacy instruction. Participants will learn the role writing plays in empowering students to generate knowledge, communicate ideas, and expand their thinking (Graham, 2020). This workshop lays the groundwork for understanding how writing happens (Berninger, 2002), what writers need to grow (Flower & Hayes, 1981; Graham et al., 2012), and why writing is essential for every content area (Graham et al., 2020; Hochman & Wexler, 2017). All K-8 educators, coaches, and leaders can benefit from this session by building a strong foundation in the basic principles of writing instruction.

K-5: Building fluent readers

(Revised 2023, 6h)

Improve student fluency with letter sounds, word reading, passage reading, and comprehending complex texts.

Fluency is a bridge between students' decoding of connected text and determining its meaning. Designed for K-5 teachers, reading specialists, instructional coaches, and principals, this workshop provides time to learn classroom strategies aligned to science of reading and examines the variables affecting reading fluency. Participants will learn activities to increase fluency for every phase of reading, from beginning readers who need to build automaticity with letter sounds, to accurate word readers building text-reading fluency, to highly skilled readers who are improving their reading comprehension. These practices, aligned with research in reading and cognitive science, can help educators increase students' word recognition and comprehension fluency across the grade bands.

K-8: Improving vocabulary and morphological knowledge (6h)

Empower students through routines for vocabulary and morphology.

Participants will dive into the world of language while learning best practices for teaching rich vocabulary, both implicitly and explicitly throughout the day (Beck et al., 2013; Crosson et al., 2019; Gallagher et al., 2019; McKeown, 2019). Educators will apply strategies for choosing high-impact vocabulary words and practice clear and efficient routines for teaching new vocabulary. Finally, participants will understand how morphological instruction can be integrated during the entire day to improve students' overall language and reading comprehension.

“

I felt supported. I felt heard. It was a textbook example of working together in true partnership. The NWEA team just came in and walked alongside us in this project. It was like, ‘We’re in this together and we’re doing some really good work that will produce results that matter for students, families, and our community.’”

Amanda Scott Thomas
Director, Community Partnership
Tacoma Public Schools

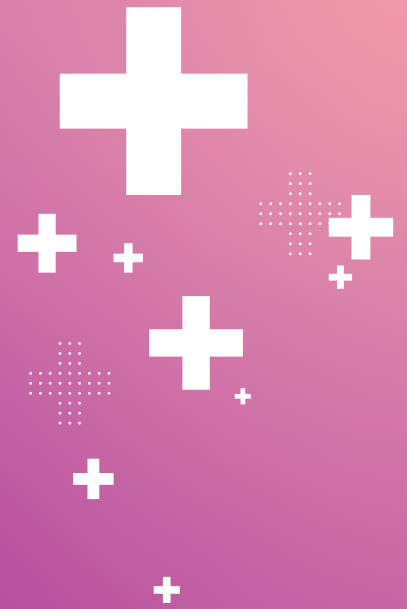
K-12: Literacy-focused instructional coaching services

On-demand implementation support empowers teachers and leaders to transform practices.

We work with local teams of teachers and leaders to continue the transformational work of the workshops and guide effective implementation. This can include:

- 1.** Guided planning for instruction or intervention services using locally adopted curricula, resources, and/or assessment data
- 2.** Capacity-building for administrators and coaches to support equitable and excellent literacy instruction through job-embedded learning walks
- 3.** Comprehensive debriefing with teachers and/or leaders to map out practical next steps for future improvements in literacy teaching and learning based on the results of the instructional planning and learning walks

These approaches support both teachers and leaders in building the highest level of skill and ultimately changing classroom practices (Joyce and Showers, 1982).



**Discover more at [NWEA.org/professional-learning](https://nwea.org/professional-learning)
or by contacting us at 866.654.3246.**

nwea

NWEA, a division of HMH, supports students and educators worldwide by providing assessment solutions, insightful reports, professional learning offerings, and research services. Visit [NWEA.org](https://nwea.org) to find out how NWEA can partner with you to help all kids learn.

©2024 Houghton Mifflin Harcourt. NWEA is a registered trademark of Houghton Mifflin Harcourt in the US and in other countries. The names of other companies and their products mentioned are the trademarked of their respective owners. All rights reserved.

APR24 | WELTSK7268