

Achievement and Growth Norms for Spanish MAP Reading Fluency Foundational Skills

April 2026

Wei He, NWEA Psychometric and Analytics



© 2026 NWEA. NWEA and MAP Growth are registered trademarks of NWEA in the U.S. and in other countries. All rights reserved. No part of this document may be modified or further distributed without written permission from NWEA.

Document History

Date	Version	Description
2023-06-07	0.1	Initial draft created by Wei He
2026-04-02	0.2	Updated and edited text and formatting

Table of Contents

1. Introduction	1
1.1. Purpose of the Study	1
1.2. Spanish MAP Reading Fluency Overview	1
2. Methodology	3
2.1. Norming Sample	3
2.2. Norming Procedure	5
3. Results	6
3.1. Descriptive Statistics of Test Scores	6
3.2. Pearson Correlation Coefficients	7
3.3. Normality Assumption	8
3.4. Achievement and Growth Norms	13
4. Conclusion and Discussion	26
References	27

List of Tables

Table 1.1. Measures Assessed in Each Domain of Spanish Version of Foundational Skills	2
Table 2.1. Number and Percentage of Test Events in Norming Sample	3
Table 2.2. Norming Sample Demographics	4
Table 3.1. Descriptive Statistics of Test Scores in the Norming Sample	6
Table 3.2. Pearson Correlation Coefficients (<i>r</i>) Among Fall, Winter, and Spring Scores	7
Table 3.3. Snapshot of Norms—Language Comprehension, Grade K	14
Table 3.4. Snapshot of Norms—Language Comprehension, Grade 1	15
Table 3.5. Snapshot of Norms—Language Comprehension, Grade 2	16
Table 3.6. Snapshot of Norms—Language Comprehension, Grade 3	17
Table 3.7. Snapshot of Norms—Phonological Awareness, Grade K	18
Table 3.8. Snapshot of Norms—Phonological Awareness, Grade 1	19
Table 3.9. Snapshot of Norms—Phonological Awareness, Grade 2	20
Table 3.10. Snapshot of Norms—Phonological Awareness, Grade 3	21
Table 3.11. Snapshot of Norms—Phonics & Word Recognition, Grade K	22
Table 3.12. Snapshot of Norms—Phonics & Word Recognition, Grade 1	23
Table 3.13. Snapshot of Norms—Phonics & Word Recognition, Grade 2	24
Table 3.14. Snapshot of Norms—Phonics & Word Recognition, Grade 3	25

List of Figures

Figure 3.1. Histograms, Q-Q Plots, and CDF Curves for Phonological Awareness Scores— Grade K, Fall	9
Figure 3.2. Histograms, Q-Q Plots, and CDF Curves for Phonological Awareness Scores— Grade K, Winter	10
Figure 3.3. Histograms, Q-Q Plots, and CDFs for Phonological Awareness Scores—Grade K, Spring	11
Figure 3.4. Scatterplot Matrix Among Fall, Winter, and Spring Phonological Awareness Scores—Grade K.....	12

1. Introduction

1.1. Purpose of the Study

This report documents the norming study procedure used to produce the achievement and growth user norms for Spanish MAP® Reading Fluency™ Foundational Skills that includes measures in three domains: Phonological Awareness, Phonics & Word Recognition, and Language Comprehension. This report also provides snapshots of the achievement and growth norms for each grade and domain that are available on score reports. The norming procedure used in this study was a model-based procedure employed in the course-specific MAP Growth Math norming study (Thum & He, 2019).

For each domain, achievement and growth norms were developed for grades K–3. These norms allow educators to compare achievement—and changes in achievement between test occasions (i.e., growth)—with students’ performance in the same grade at a comparable instructional stage of the school year. In achievement norms, a student’s performance on the Spanish MAP Reading Fluency test is associated with a percentile ranking that shows how well the student performed in a domain compared with students in the norming group. The relative evaluation of a student’s growth from one period to another (e.g., from fall to spring) is provided by growth norms. The achievement norms cover three terms (fall, winter, and spring), and the growth norms cover fall-to-winter, winter-to-spring, and fall-to-spring growth within a grade level.

1.2. Spanish MAP Reading Fluency Overview

There are both English and Spanish versions of the MAP Reading Fluency assessment.¹ The English MAP Reading Fluency assessment became available to the public in 2018–2019, with the Spanish version becoming operational in Fall 2019.

Though Spanish MAP Reading Fluency is designed to support biliteracy programs and emergent bilinguals in multiple educational contexts, Spanish MAP Reading Fluency Foundational Skills measures were developed while keeping in mind the orthographic differences between the English and Spanish languages. For example, Spanish has a highly transparent orthography (i.e., sounds as written), whereas English orthography is much opaquer. Consequently, Foundational Skills measures for Spanish focus predominantly on the syllable rather than on phonemes as in English.

Like its English counterpart, Spanish MAP Reading Fluency is also designed to support students on their path to reading comprehension by assessing and helping to improve both oral reading fluency and foundational reading skills. The assessment is administered as a multistage adaptive test in such a way that students receive easier or more-difficult tasks based on their performance on previous tasks. Tests can be administered in a group setting rather than one-on-one, which saves teachers valuable classroom instructional time. Students typically take the assessment three times a year in the fall, winter, and spring.

While teachers can choose from various test forms, Adaptive Oral Reading is the default form that routes students to either the Oral Reading Fluency track if they are ready to read passages or to the Foundational Skills track if they are not. Teachers can also directly assign students to either track. Table 1.1 presents the measures assessed in each domain of the Foundational Skills track for the Spanish version. As shown in the table, each Foundational Skills domain

¹ The norms in this report are only applicable to the Spanish version.

includes multiple measures. In the Phonological Awareness and Phonics & Word Recognition domains, a subset of measures is selected adaptively during each test event based on student performance within a progression of skills. In the Language Comprehension domain, both Picture Vocabulary and Listening Comprehension measures are administered to all students.

All Spanish Foundational Skills items are scored dichotomously. The Rasch model was used for item calibration. Student ability estimates were put onto a scale with a mean of 500 and a standard deviation of 10 using test events collected during Fall 2019 to Spring 2022. Scores in each domain can be compared across grades.

Table 1.1. Measures Assessed in Each Domain of Spanish Version of Foundational Skills

Domain	Measure
Phonological Awareness	Rhyme Completion
	Counting Syllables
	Syllable Blending
	Initial Sound Matching
	Phoneme Blending
	Segment & Count Phonemes
	Syllable Addition/Deletion
	Phoneme Substitution
Phonics & Word Recognition	Letter Knowledge
	Letter-Sound Fluency
	Words' Initial Letters
	Building Words: One Syllable Missing
	Decoding: Beginning Words
	Building Words: Two Syllables Missing
	Decoding: Multi-Syllable Words
	Building Words: All Syllables Missing
	Sentence Reading Fluency
Language Comprehension	Picture Vocabulary
	Listening Comprehension

2. Methodology

2.1. Norming Sample

This norming study used the Phonological Awareness, Phonics & Word Recognition, and Language Comprehension Spanish test events administered to grades K–3 students during three school years: 2019–2020, 2020–2021, and 2021–2022.

The test events of interest were scored in early 2023 in an effort to calibrate and score the Foundational Skills measures. Test scores with person infit statistics larger than 2 were excluded from use. Table 2.1 presents the number of test events in each subject domain across term, grade, and school year included in this study, along with their corresponding percentages of test events over the total number of test events in the three school years. The table indicates that the number of test events administered for all subject domains collectively dropped to remarkably low numbers in the spring of 2020 as student learning was disrupted due to the outbreak of COVID-19 but resumed in the 2020–2021 school year and then reached to the largest numbers in the 2021–2022 school year. As Table 2.1 indicates, approximately 50% of test events in the norming samples were from the 2021–2022 school year for all domains, and the test events administered in the 2020–2021 and 2021–2022 school years comprised approximately 80% of the test events in the norming samples. In other words, the norms are more heavily weighted toward pandemic performance, although the norming samples consisted of pre- and concurrent pandemic data. The table also shows that approximately 70% of test events were from kindergarten and grade 1 students. In comparison, grade 3 had the fewest test events, most likely because most grade 3 students have progressed well beyond foundational reading skills.

Table 2.1. Number and Percentage of Test Events in Norming Sample

Domain	Term	Test Events by Grade								All Test Events	
		K		1		2		3		N	%
		N	%	N	%	N	%	N	%		
Phonological Awareness	Fall 2019	3,365	2.0	4,554	2.7	3,627	2.1	2,214	1.3	13,760	8.1
	Winter 2020	4,441	2.6	10,846	6.4	2,677	1.6	1,333	0.8	19,297	11.3
	Spring 2020	4	0.0	25	0.0	52	0.0	11	0.0	92	0.1
	2019/20 Total	7,810	4.6	15,425	9.1	6,356	3.7	3,558	2.1	33,149	19.5
	Fall 2020	3,544	2.1	6,228	3.7	4,063	2.4	2,200	1.3	16,035	9.4
	Winter 2021	3,939	2.3	6,974	4.1	3,138	1.8	1,405	0.8	15,456	9.1
	Spring 2021	8,907	5.2	5,339	3.1	3,341	2.0	1,236	0.7	18,823	11.1
	2020/21 Total	16,390	9.6	18,541	10.9	10,542	6.2	4,841	2.8	50,314	29.6
	Fall 2021	7,559	4.4	10,932	6.4	8,624	5.1	4,088	2.4	31,203	18.3
	Winter 2022	8,562	5.0	11,676	6.9	5,776	3.4	2,117	1.2	28,131	16.5
	Spring 2022	12,045	7.1	8,855	5.2	4,919	2.9	1,551	0.9	27,370	16.1
	2021/22 Total	28,166	16.6	31,463	18.5	19,319	11.4	7,756	4.6	86,704	51.0
Overall	52,366	30.8	65,429	38	36,217	21	16,155	9.49	170,167	100	
Phonics & Word Recognition	Fall 2019	3,419	2.0	4,594	2.7	3,651	2.1	2,232	1.3	13,896	8.1
	Winter 2020	4,462	2.6	10,868	6.4	2,686	1.6	1,334	0.8	19,350	11.3
	Spring 2020	4	0.0	25	0.0	52	0.0	11	0.0	92	0.1
	2019/20 Total	7,885	4.6	15,487	9.1	6,389	3.7	3,577	2.1	33,338	19.5

Domain	Term	Test Events by Grade								All Test Events	
		K		1		2		3		N	%
		N	%	N	%	N	%	N	%		
	Fall 2020	3,590	2.1	6,295	3.7	4,113	2.4	2,236	1.3	16,234	9.5
	Winter 2021	3,964	2.3	7,023	4.1	3,173	1.9	1,428	0.8	15,588	9.1
	Spring 2021	8,933	5.2	5,363	3.1	3,365	2.0	1,253	0.7	18,914	11.1
	2020/21 Total	16,487	9.6	18,681	10.9	10,651	6.2	4,917	2.9	50,736	29.7
	Fall 2021	7,599	4.4	10,946	6.4	8,640	5.1	4,095	2.4	31,280	18.3
	Winter 2022	8,581	5.0	11,699	6.8	5,785	3.4	2,122	1.2	28,187	16.5
	Spring 2022	12,072	7.1	8,875	5.2	4,922	2.9	1,556	0.9	27,425	16.0
	2021/22 Total	28,252	16.5	31,520	18.4	19,347	11.3	7,773	4.5	86,892	50.8
	Overall	52,624	30.8	65,688	38.4	36,387	21.3	16,267	9.5	170,966	100.0
Language Comprehension	Fall 2019	3,415	2.0	4,576	2.7	3,624	2.1	2,217	1.3	13,832	8.1
	Winter 2020	4,453	2.6	10,836	6.3	2,677	1.6	1,334	0.8	19,300	11.3
	Spring 2020	4	0.0	25	0.0	52	0.0	11	0.0	92	0.1
	2019/20 Total	7,872	4.6	15,437	9.0	6,353	3.7	3,562	2.1	33,224	19.4
	Fall 2020	3,629	2.1	6,300	3.7	4,114	2.4	2,236	1.3	16,279	9.5
	Winter 2021	3,986	2.3	7,028	4.1	3,174	1.9	1,431	0.8	15,619	9.1
	Spring 2021	8,961	5.2	5,367	3.1	3,365	2.0	1,253	0.7	18,946	11.1
	2020/21 Total	16,576	9.7	18,695	10.9	10,653	6.2	4,920	2.9	50,844	29.7
	Fall 2021	7,614	4.5	10,956	6.4	8,640	5.1	4,096	2.4	31,306	18.3
	Winter 2022	8,583	5.0	11,701	6.8	5,785	3.4	2,122	1.2	28,191	16.5
	Spring 2022	12,077	7.1	8,875	5.2	4,922	2.9	1,556	0.9	27,430	16.0
	2021/22 Total	28,274	16.5	31,532	18.4	19,347	11.3	7,774	4.5	86,927	50.8
	Overall	52,722	30.8	65,664	38.4	36,353	21.3	16,256	9.5	170,995	100.0

Table 2.2 presents the numbers and percentages of students in the norming study sample by gender and race. The n-counts differ from the totals in Table 2.1 because Table 2.2 counts unique students only once across terms. In general, the norming sample had slightly more male students than female students across all grades. A very large percentage of students in the norming sample (i.e., at least 80% in all grades except kindergarten) were Hispanic. It is worth mentioning that students in the norming sample came from 44 states, U.S. territories, and several foreign countries outside the United States. Approximately 75% of students in the norming sample were from Texas, followed by the second-largest group of students coming from Illinois at 8.3%.

Table 2.2. Norming Sample Demographics

Demographic Subgroup	Students by Grade									
	K		1		2		3		N	%
	N	%	N	%	N	%	N	%		
Gender										
Female	13,520	48.1	18,698	48.7	9,861	48.4	4,913	47.1		
Male	13,809	49.2	18,920	49.3	10,067	49.4	5,359	51.4		
Missing or Not Specified	758	2.7	779	2.0	434	2.1	156	1.5		

Demographic Subgroup	Students by Grade							
	K		1		2		3	
	N	%	N	%	N	%	N	%
Total	28,087	100.0	38,397	100.0	20,362	100.0	10,428	100.0
Race								
African American/Black	282	1.0	317	0.8	242	1.2	92	0.9
American Indian or Alaska Native	252	0.9	265	0.7	135	0.7	87	0.8
Asian	72	0.3	70	0.2	49	0.2	14	0.1
Hispanic	22,012	78.4	32,058	83.5	16,482	80.9	8,731	83.7
Native Hawaiian or Other Pacific Islander	11	0.0	14	0.0	8	0.0	7	0.1
Multi-Ethnic	514	1.8	571	1.5	409	2.0	141	1.4
White	3,205	11.4	3,326	8.7	2,097	10.3	961	9.2
Missing or Not Specified	1,739	6.2	1,776	4.6	940	4.6	395	3.8
Total	28,087	100.0	38,397	100.0	20,362	100.0	10,428	100.0

2.2. Norming Procedure

The model-based approach described in Thum and He (2019) was used to develop both the achievement and growth user norms. Using a multivariate true score model that accounts for the known imprecision of scores from the fall, winter, and spring terms from students in the selected norming population, this approach provides students in each grade with achievement norms in each term and growth norms for academic gains between different terms, including fall to winter, winter to spring, and fall to spring. The true score model is expressed as follows:

$$y_{qi} = \mu_{qi} + e_{qi}$$

where y_{qi} is the observed score for student i in each term q ($q = 1$ to 3 for fall, winter, and spring, respectively); μ_{qi} is the true score for student i in each term q ; and e_{qi} is the error score for student i in each term q . The imprecision of observed scores is considered in the analysis by introducing the standard error of measurement of each score (s_{qi}) into the model, such that:

$$Var(e_{qi}) = s_{qi}^2$$

True scores of students are assumed to have a multivariate normal sampling distribution with means of γ_i and variances of T in the user population. The parameter estimates $\hat{\gamma}$, $Var(\hat{\gamma})$, and \hat{T} , which can be obtained by standard statistics packages such as SAS via PROC MIXED, define the joint distribution of predicted fall, winter, and spring scores in the following equation for the user norming population:

$$\hat{\mu}_i \sim MVN[\hat{\gamma}, Var(\hat{\gamma}) + \hat{T}]$$

The joint distribution provides the basis to build achievement and growth norms. The achievement norms for the scores of each term in each grade can be derived from the predicted marginal distributions, as are the marginal growth norms. The conditional growth for students in a given term can be obtained as the predicted distribution.

3. Results

3.1. Descriptive Statistics of Test Scores

Table 3.1 presents descriptive statistics for the test scores in each domain by school year, grade, and term in the norming sample, including the mean (average) test score, standard deviation (SD), and number of test events (N). For each domain, test scores in general increased across terms and grades within each school year. As students advanced to a higher grade (e.g., from grade 2 to grade 3), less cross-grade and within-grade growth was observed. It can also be observed that while test volume in the 2021–2022 school year reached its highest for all subject domains, student performance during that school year was worse compared with the other two school years. Given that at least 50% of the norming sample was from the 2021–2022 school year, the resulting norms were heavily weighted toward the 2021–2022 pandemic performance.

Table 3.1. Descriptive Statistics of Test Scores in the Norming Sample

Year	Grade	Stat	Phonological Awareness			Phonics & Word Recognition			Language Comprehension		
			Fall	Winter	Spring	Fall	Winter	Spring	Fall	Winter	Spring
2019/20	K	Mean	490.4	494.5	491.4	488.2	493.9	496.9	491.4	494.8	499.7
		SD	8.0	7.9	11.9	6.2	8.2	17.5	7.1	7.8	9.2
		N	3,365	4,441	4	3,419	4,462	4	3,415	4,453	4
	1	Mean	498.6	502.0	506.8	499.7	504.0	505.3	497.9	501.5	508.7
		SD	8.1	8.5	8.8	8.9	8.7	9.0	8.4	8.2	9.3
		N	4,554	10,846	25	4,594	10,868	25	4,576	10,836	25
	2	Mean	503.0	505.3	505.5	505.6	506.5	507.0	502.6	504.6	510.2
		SD	8.1	8.6	8.2	7.6	7.5	6.5	8.2	8.4	7.9
		N	3,627	2,677	52	3,651	2,686	52	3,624	2,677	52
	3	Mean	505.8	507.1	512.7	507.9	507.5	507.0	505.5	506.3	504.7
		SD	8.1	8.9	10.9	6.8	7.0	7.2	8.1	8.5	10.0
		N	2,214	1,333	11	2,232	1,334	11	2,217	1,334	11
2020/21	K	Mean	495.0	496.7	498.5	492.4	495.0	497.8	496.5	497.2	499.3
		SD	10.3	10.1	9.6	9.2	9.3	9.5	10.8	10.6	10.2
		N	3,544	3,939	8,907	3,590	3,964	8,933	3,629	3,986	8,961
	1	Mean	500.7	502.0	503.2	501.5	502.7	503.7	501.3	502.5	503.6
		SD	9.6	9.5	9.6	9.2	9.2	8.5	10.5	10.1	10.1
		N	6,228	6,974	5,339	6,295	7,023	5,363	6,300	7,028	5,367
	2	Mean	503.7	504.3	504.9	505.7	505.5	505.3	504.3	504.2	504.4
		SD	8.8	9.0	9.3	7.9	7.8	7.8	9.8	9.5	9.7
		N	4,063	3,138	3,341	4,113	3,173	3,365	4,114	3,174	3,365
	3	Mean	505.8	506.3	506.4	507.9	507.4	506.8	506.2	505.6	505.4
		SD	8.7	9.5	9.3	6.9	7.4	6.9	9.0	9.6	10.0
		N	2,200	1,405	1,236	2,236	1,428	1,253	2,236	1,431	1,253
2021/22	K	Mean	489.3	493.6	497.1	486.5	491.8	496.5	490.6	493.9	497.5
		SD	7.9	8.1	8.6	5.8	7.4	8.7	7.3	8.3	9.0
		N	7,559	8,562	12,045	7,599	8,581	12,072	7,614	8,583	12,077

Year	Grade	Stat	Phonological Awareness			Phonics & Word Recognition			Language Comprehension		
			Fall	Winter	Spring	Fall	Winter	Spring	Fall	Winter	Spring
	1	Mean	496.7	500.8	502.9	496.3	500.6	502.6	496.8	500.5	502.4
		SD	8.6	9.3	9.6	9.2	9.2	8.6	9.2	9.3	9.6
		N	10,932	11,676	8,855	10,946	11,699	8,875	10,956	11,701	8,875
	2	Mean	501.6	503.5	504.7	502.5	503.5	504.1	501.2	502.4	503.0
		SD	9.1	9.3	9.8	8.4	8.2	7.7	9.3	9.3	9.5
		N	8,624	5,776	4,919	8,640	5,785	4,922	8,640	5,785	4,922
	3	Mean	504.7	505.7	505.3	505.8	505.6	505.2	504.1	504.5	505.0
		SD	8.8	8.8	9.3	7.6	7.4	7.7	8.7	9.0	9.5
		N	4,088	2,117	1,551	4,095	2,122	1,556	4,096	2,122	1,556
Overall	K	Mean	490.9	494.5	497.7	488.4	493.1	497.1	492.3	494.9	498.2
		SD	8.9	8.6	9.1	7.3	8.2	9.1	8.6	8.9	9.6
		N	14,468	16,942	20,956	14,608	17,007	21,009	14,658	17,022	21,042
	1	Mean	498.2	501.5	503.0	498.5	502.4	503.1	498.3	501.3	502.8
		SD	9.0	9.1	9.6	9.4	9.2	8.6	9.6	9.1	9.8
		N	21,714	29,496	14,219	21,835	29,590	14,263	21,832	29,565	14,267
	2	Mean	502.5	504.1	504.8	504.0	504.7	504.6	502.3	503.4	503.6
		SD	8.9	9.1	9.6	8.2	8.0	7.8	9.3	9.2	9.6
		N	16,314	11,591	8,312	16,404	11,644	8,339	16,378	11,636	8,339
	3	Mean	505.3	506.3	505.8	506.9	506.6	505.9	505.0	505.3	505.1
		SD	8.6	9.0	9.3	7.3	7.3	7.4	8.7	9.0	9.7
		N	8,502	4,855	2,798	8,563	4,884	2,820	8,549	4,887	2,820

3.2. Pearson Correlation Coefficients

Table 3.2 presents the numbers of test events and the corresponding Pearson correlation coefficients of scores across different terms by domain and grade after listwise deletion (i.e., the calculation was conducted using only students who had scores in all three terms). These coefficients range between 0.35 and 0.54 for Phonological Awareness, 0.48 and 0.77 for Phonics & Word Recognition, and 0.52 and 0.70 for Language Comprehension. These results suggest that, in general, the scores in different terms were moderately correlated.

Table 3.2. Pearson Correlation Coefficients (*r*) Among Fall, Winter, and Spring Scores

Domain	Grade	N	<i>r</i>		
			Fall, Winter	Winter, Spring	Fall, Spring
Phonological Awareness	K	8,143	0.44	0.49	0.35
	1	8,576	0.48	0.54	0.42
	2	4,720	0.48	0.53	0.43
	3	1,506	0.47	0.53	0.46
Phonics & Word Recognition	K	8,247	0.64	0.71	0.48
	1	8,667	0.73	0.76	0.61
	2	4,777	0.76	0.75	0.67
	3	1,547	0.77	0.76	0.71

Domain	Grade	N	<i>r</i>		
			Fall, Winter	Winter, Spring	Fall, Spring
Language Comprehension	K	8,293	0.59	0.66	0.52
	1	8,677	0.66	0.70	0.62
	2	4,778	0.67	0.67	0.61
	3	1,549	0.65	0.65	0.61

3.3. Normality Assumption

The reasonableness of the joint normality assumption of scores is important for inferences based on the multivariate true score models. As such, a series of measures and tools were employed to evaluate normality, such as Quantile-Quantile (Q-Q) plots, cumulative distribution function (CDF) curves for scores, and residuals from model estimation. Due to space limitation, this report only presents a series of graphs—including histograms, Q-Q plots, and CDF curves—based on Phonological Awareness scores (left panel of the figures) and residuals from model estimation (right panel of the figures) for grade K students in Figure 3.1, Figure 3.2, and Figure 3.3. Figure 3.4 presents the scatterplot matrix among fall, winter, and spring Phonological Awareness scores for grade K students. While the Q-Q plots indicate some deviations from the straight line at the tails, the figures suggest that normality assumptions of the model seem reasonable. The figures for other domains were similar to those for the Phonological Awareness scores for grade K. Overall, the model normality assumption was met for all domains and grades of interest in this norming study.

Figure 3.1. Histograms, Q-Q Plots, and CDF Curves for Phonological Awareness Scores—Grade K, Fall

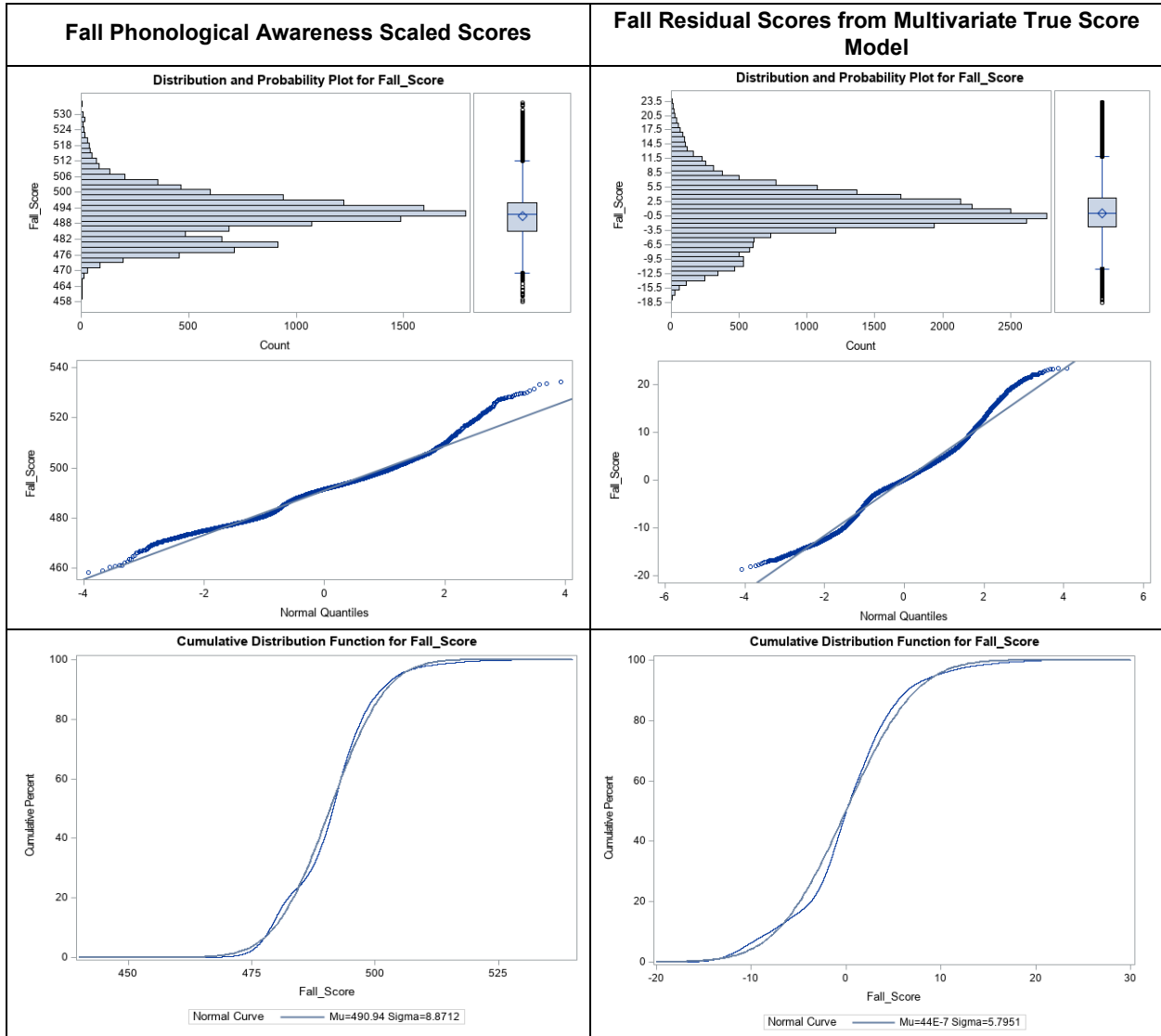


Figure 3.2. Histograms, Q-Q Plots, and CDF Curves for Phonological Awareness Scores—Grade K, Winter

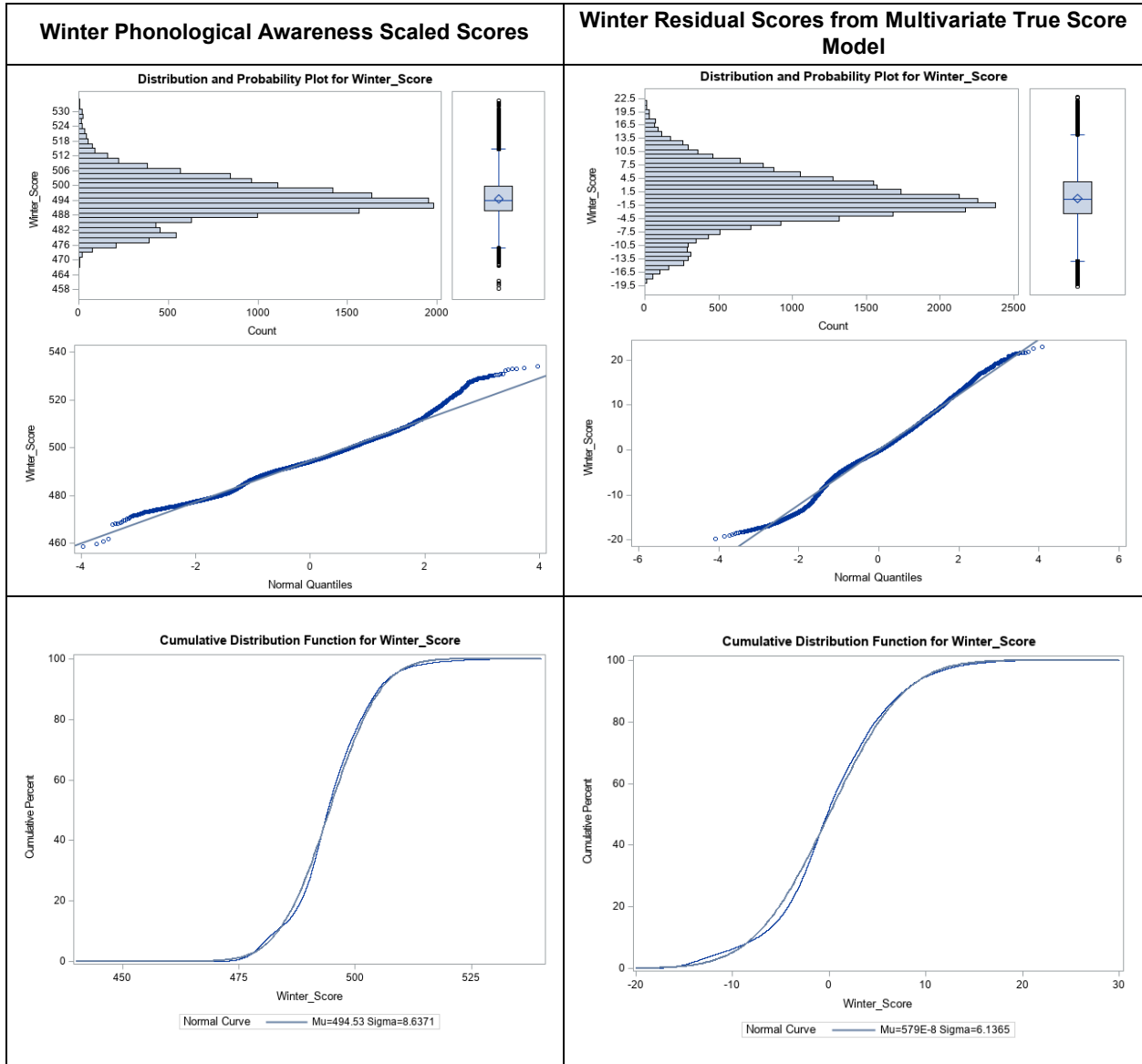


Figure 3.3. Histograms, Q-Q Plots, and CDFs for Phonological Awareness Scores—Grade K, Spring

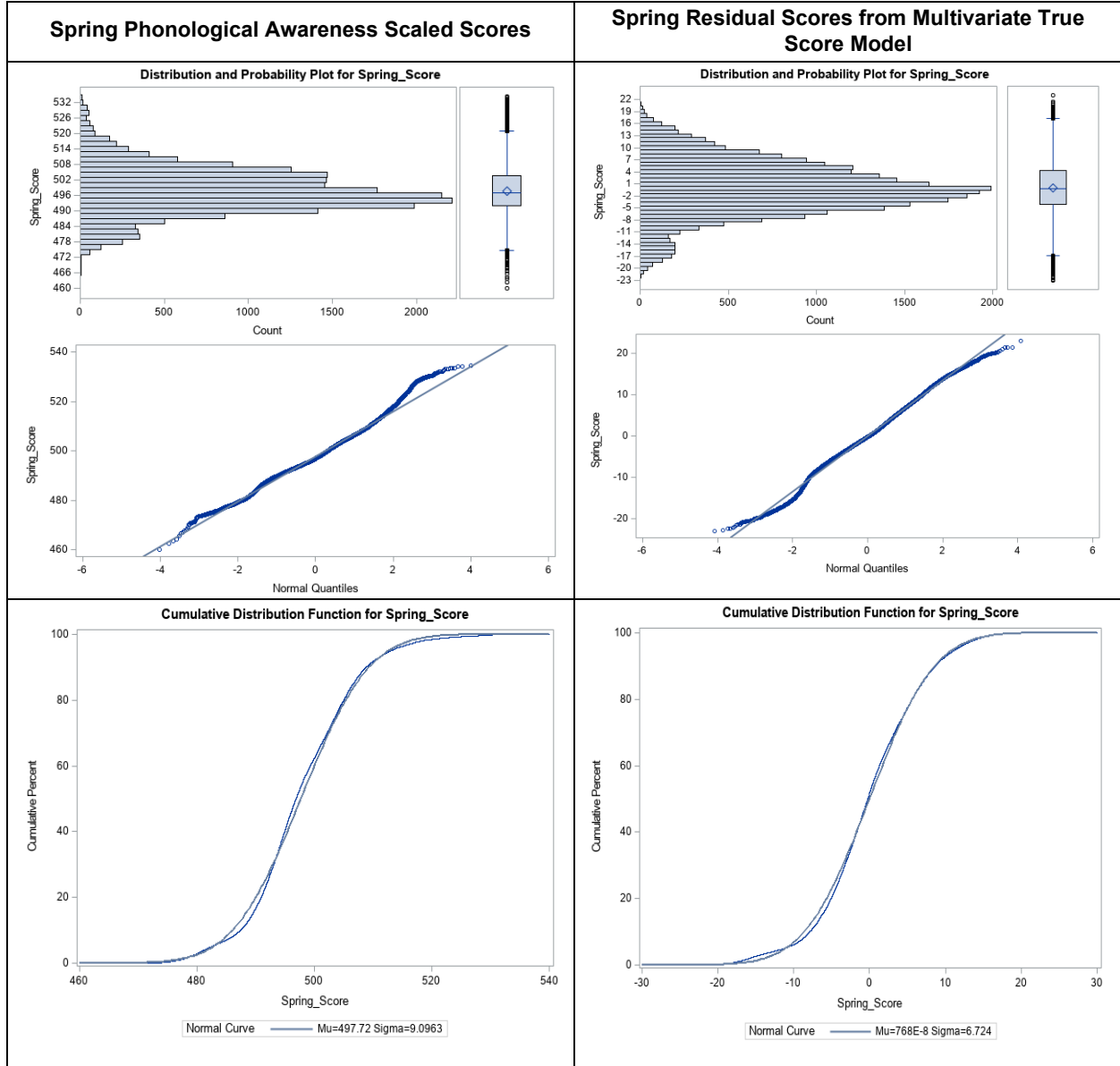
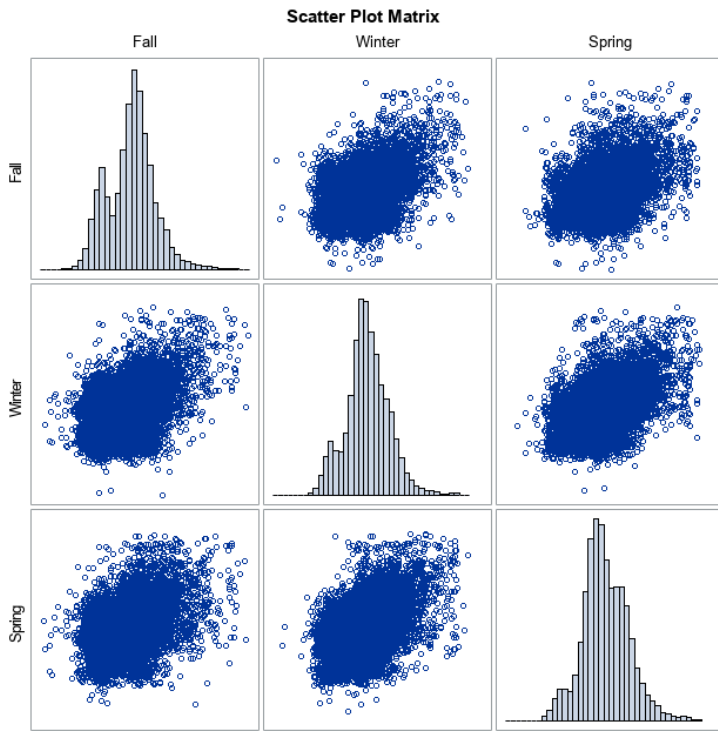
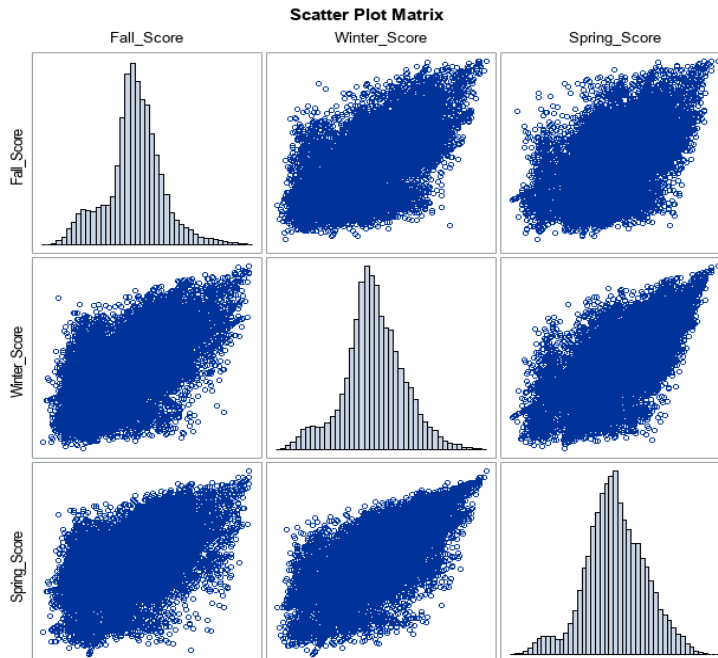


Figure 3.4. Scatterplot Matrix Among Fall, Winter, and Spring Phonological Awareness Scores—Grade K

Scatterplot Matrix Based on PA Scaled Scores



Scatterplot Matrix Based on Multivariate True Score Model Residuals



3.4. Achievement and Growth Norms

Table 3.3–Table 3.14 present snapshots of the achievement and growth norms for each domain in grades K–3. Panels A, B, and C in each table present the achievement and between-term growth norms in a domain for the same grade. Guidance for how to interpret the tables is listed below:

- The grey columns indicate the percentile rank, ranging from 5 to 95 at an interval of 5. For ease of presentation, only a select group of percentiles is provided. Users should instead refer to their score reports for their unique normative-referenced performance information.
- The blue columns present the achievement norm scores for each term. These stay the same across panels in a table.
- The green columns present the expected between-term growth score for a specific percentile rank score and the standard deviation (SD) of the between-term growth. These differ across panels between fall-to-winter (Panel A), winter-to-spring (Panel B), and fall-to-spring (Panel C) growth.
- The yellow and mixed-colored boxes permit a normative evaluation of the actual gain a student may have made between different terms.
 - The yellow boxes indicate the corresponding winter or spring achievement norms and the corresponding percentiles.
 - The mixed-colored boxes indicate the growth percentiles associated with the between-term growth scores.

Using a hypothetical grade K student who scores 486, 490, and 494 in the Language Comprehension domain for fall, winter, and spring, respectively, to illustrate how to interpret these tables, those scores would place this student at the 15th, 25th, and 30th percentiles in fall, winter, and spring, respectively, based on the grey column in Table 3.3. In other words, this student performs better than 15%, 25%, and 30% of the other grade K students who also took the same test each term, respectively.

As mentioned above, the yellow and mixed-colored boxes permit a normative evaluation of the actual gain a student may have made between different terms. The hypothetical student improved 4 points from fall to winter (i.e., 486 → 490). Locating the intersection between the row where the achievement norm score in fall is 486 (in blue) and the column where the winter score is 490 (in yellow) in Panel A, the 4-point fall-to-winter gain puts this student at the 57th percentile in the fall-to-winter growth scale (in mixed-color). In other words, this student's progress is better than 57% of all other grade K students in the norming sample who also scored 486 in the fall (i.e., students in the 15th percentile). The green columns in Panel A further show that this student's progress is above average based on the fall-to-winter expected growth for a student who scores 486 in the fall (i.e., the 15th percentile). The average gain is 3.4 points with an associated standard deviation of growth of 4.2, thus putting the student's gain of 4 points above average. Similar interpretations for winter-to-spring and fall-to-spring growth can be made based on Panel B and Panel C, respectively.

Table 3.3. Snapshot of Norms—Language Comprehension, Grade K

A

Percentile	Achievement Norm Score			Fall-Winter Cond. Growth		Winter Percentile and Score																			
	Fall	Winter	Spring	Mean	SD	5	10	15	20	25	30	35	40	45	50	55	60	65	70	75	80	85	90	95	
	482	483	485	3.8	4.2	483	486	488	489	490	491	492	493	494	495	496	497	498	499	500	501	502	504	507	
5	482	483	485	3.8	4.2	27	50	66	78	85	90	94	96	98	99	99	99	99	99	99	99	99	99	99	
10	484	486	488	3.6	4.2	15	33	50	63	73	81	87	91	94	96	98	99	99	99	99	99	99	99	99	
15	486	488	490	3.4	4.2	7	20	33	46	57	67	75	82	87	91	94	96	98	99	99	99	99	99	99	
20	487	489	492	3.3	4.2	5	14	26	37	49	59	68	75	82	87	91	94	96	98	99	99	99	99	99	
25	488	490	493	3.2	4.2	3	10	19	30	40	50	60	68	76	82	87	91	94	96	98	99	99	99	99	
30	489	491	494	3.1	4.2	2	7	14	23	32	42	51	60	68	76	82	87	91	94	97	98	99	99	99	
35	490	492	495	3.0	4.2	1	4	10	17	25	34	43	52	60	68	76	82	87	92	95	97	99	99	99	
40	491	493	496	2.9	4.2	1	3	7	12	19	26	34	43	52	60	68	76	82	88	92	96	98	99	99	
45	491	494	497	2.9	4.2	1	3	7	12	19	26	34	43	52	60	68	76	82	88	92	96	98	99	99	
50	492	495	498	2.8	4.2	1	2	4	8	13	20	27	35	43	52	60	68	76	83	89	93	97	99	99	
55	493	496	499	2.7	4.2	1	1	3	5	9	14	20	27	35	43	52	60	69	77	84	90	95	98	99	
60	494	497	500	2.6	4.2	1	1	2	3	6	10	15	21	27	35	43	52	61	70	78	85	92	97	99	
65	495	498	501	2.5	4.2	1	1	1	2	4	7	10	15	21	27	35	43	52	62	71	80	88	94	99	
70	496	499	502	2.4	4.2	1	1	1	1	2	4	7	11	15	21	27	35	44	53	63	73	83	92	98	
75	497	500	503	2.3	4.2	1	1	1	1	1	3	5	7	11	15	21	28	36	45	55	66	77	88	96	
80	498	501	504	2.2	4.2	1	1	1	1	1	2	3	5	7	11	15	21	28	36	46	58	70	83	94	
85	499	502	506	2.1	4.2	1	1	1	1	1	1	2	3	5	7	11	15	21	29	38	49	62	77	91	
90	500	504	508	1.9	4.2	1	1	1	1	1	1	1	2	3	5	7	11	15	22	30	41	54	70	87	
95	503	507	511	1.6	4.2	1	1	1	1	1	1	1	1	1	1	2	3	5	8	12	19	29	45	69	

B

Percentile	Achievement Norm Score			Winter-Spring Cond. Growth		Spring Percentile and Score																			
	Fall	Winter	Spring	Mean	SD	5	10	15	20	25	30	35	40	45	50	55	60	65	70	75	80	85	90	95	
	485	488	490	4.1	4.1	485	488	490	492	493	494	495	496	497	498	499	500	501	502	503	504	506	508	511	
5	482	483	485	4.1	4.1	34	60	76	86	92	95	97	99	99	99	99	99	99	99	99	99	99	99	99	
10	484	486	488	3.9	4.1	14	34	52	66	77	84	90	94	96	98	99	99	99	99	99	99	99	99	99	
15	486	488	490	3.7	4.1	6	20	35	49	61	71	80	86	91	94	96	98	99	99	99	99	99	99	99	
20	487	489	492	3.6	4.1	4	14	27	40	53	63	73	80	86	91	94	96	98	99	99	99	99	99	99	
25	488	490	493	3.5	4.1	2	10	20	32	44	55	65	74	81	87	91	94	97	98	99	99	99	99	99	
30	489	491	494	3.4	4.1	1	6	14	24	35	46	56	66	74	81	87	91	95	97	98	99	99	99	99	
35	490	492	495	3.3	4.1	1	4	10	18	27	37	48	57	66	75	82	87	92	95	97	99	99	99	99	
40	491	493	496	3.2	4.1	1	2	7	13	20	29	39	49	58	67	75	82	88	92	96	98	99	99	99	
45	491	494	497	3.1	4.1	1	1	4	9	15	22	31	40	49	59	67	76	83	89	93	96	99	99	99	
50	492	495	498	3.0	4.1	1	1	3	6	10	16	23	31	40	50	59	68	76	84	90	94	97	99	99	
55	493	496	499	2.9	4.1	1	1	2	4	7	11	17	24	32	41	50	60	69	77	85	91	96	99	99	
60	494	497	500	2.8	4.1	1	1	1	2	4	8	12	18	25	33	41	51	61	70	79	87	93	98	99	
65	495	498	501	2.8	4.1	1	1	1	1	3	5	8	13	18	25	33	42	52	62	72	82	90	96	99	
70	496	499	502	2.7	4.1	1	1	1	1	2	3	5	9	13	18	25	34	43	53	64	75	85	93	99	
75	497	500	503	2.6	4.1	1	1	1	1	1	2	3	6	9	13	19	26	35	45	56	68	80	90	98	
80	498	501	504	2.5	4.1	1	1	1	1	1	1	2	3	6	9	13	19	27	36	47	59	73	86	96	
85	499	502	506	2.4	4.1	1	1	1	1	1	1	1	2	4	6	9	14	20	28	38	51	65	80	94	
90	500	504	508	2.2	4.1	1	1	1	1	1	1	1	1	1	2	4	6	10	15	23	33	47	65	86	
95	503	507	511	1.9	4.1	1	1	1	1	1	1	1	1	1	1	1	1	3	5	8	14	23	39	66	

C

Percentile	Achievement Norm Score			Fall-Spring Cond. Growth		Spring Percentile and Score																			
	Fall	Winter	Spring	Mean	SD	5	10	15	20	25	30	35	40	45	50	55	60	65	70	75	80	85	90	95	
	485	488	490	7.4	5.4	485	488	490	492	493	494	495	496	497	498	499	500	501	502	503	504	506	508	511	
5	482	483	485	7.4	5.4	23	41	55	66	74	80	85	89	92	95	96	98	98	99	99	99	99	99	99	
10	484	486	488	7.1	5.4	15	30	43	54	63	71	77	82	87	90	93	95	97	98	99	99	99	99	99	
15	486	488	490	6.8	5.4	9	20	31	41	51	59	67	73	79	84	88	91	94	96	97	99	99	99	99	
20	487	489	492	6.6	5.4	6	16	26	35	44	53	61	68	74	79	84	88	91	94	96	98	99	99	99	
25	488	490	493	6.5	5.4	5	12	21	30	38	47	54	62	69	75	80	85	89	92	95	97	98	99	99	
30	489	491	494	6.3	5.4	3	9	17	24	32	40	48	56	63	69	75	81	85	89	93	96	98	99	99	
35	490	492	495	6.1	5.4	2	7	13	20	27	34	42	49	57	64	70	76	81	86	90	94	97	99	99	
40	491	493	496	6.0	5.4	2	5	10	16	22	29	36	43	50	58	64	71	77	83	88	92	95	98	99	
45	491	494	497	6.0	5.4	2	5	10	16	22	29	36	43	50	58	64	71	77	83	88	92	95	98	99	
50	492	495	498	5.8	5.4	1	4	7	12	18	24	30	37	44	51	58	65	72	78	84	89	93	97	99	
55	493	496	499	5.7	5.4	1	3	6	9	14	19	25	31	38	45	52	59	66	73	80	86	91	96	99	
60	494	497	500	5.5	5.4	1	2	4	7	11	15	20	26	32	39	46	53	61	68	75	82	88	94	98	
65	495	498	501	5.4	5.4	1	1	3	5	8	12	16	21	27	33	40	47	54	62	70	78	85	92	97	
70	496	499	502	5.2	5.4	1	1	2	4	6	9	13	17	22	28	34	41	48	56	64	73	81	89	96	
75	497	500	503	5.0	5.4	1	1	1	3	4	7	10	13	18	23	28	35	42	50	58	67	77	86	94	
80	498	501	504	4.9	5.4	1	1	1	2	3	5	7	10	14	18	23	29	36	44	52	61	71	82	92	
85	499	502	506	4.7	5.4	1	1	1	1	2	4	5	8	11	14	19	24	30	38	46	55	66	78	90	
90	500	504	508	4.6	5.4	1	1	1	1	1	2	4	6	8	11	15	19	25	32	40	49	60	73	87	
95	503	507	511	4.1	5.4	1	1	1	1	1	1	1	2	3	5	7	9	13	17	23	31	41	55	74	

Table 3.4. Snapshot of Norms—Language Comprehension, Grade 1

A

Percentile	Achievement Norm Score			Fall-Winter Cond. Growth		Winter Percentile and Score																		
	Fall	Winter	Spring	Mean	SD	5	10	15	20	25	30	35	40	45	50	55	60	65	70	75	80	85	90	95
	485	489	490	4.9	3.7	489	491	493	495	496	497	498	499	500	501	502	503	504	505	506	507	509	511	513
5	485	489	490	4.9	3.7	38	67	82	91	95	98	99	99	99	99	99	99	99	99	99	99	99	99	99
10	488	491	493	4.5	3.7	16	39	59	73	83	90	94	97	98	99	99	99	99	99	99	99	99	99	99
15	490	493	495	4.2	3.7	7	23	41	56	69	79	86	91	95	97	98	99	99	99	99	99	99	99	99
20	492	495	497	3.9	3.7	3	11	24	38	51	63	73	81	88	92	95	97	99	99	99	99	99	99	99
25	493	496	498	3.7	3.7	2	8	17	29	42	54	65	75	82	88	92	96	98	99	99	99	99	99	99
30	494	497	499	3.6	3.7	1	5	12	22	33	45	56	67	75	83	89	93	96	98	99	99	99	99	99
35	495	498	500	3.4	3.7	1	3	8	16	25	36	47	58	67	76	83	89	93	96	98	99	99	99	99
40	496	499	501	3.3	3.7	1	2	5	11	18	28	38	48	59	68	77	84	90	94	97	99	99	99	99
45	497	500	502	3.2	3.7	1	1	3	7	13	20	29	39	49	60	69	78	85	91	95	98	99	99	99
50	498	501	503	3.0	3.7	1	1	2	4	9	14	22	31	40	50	61	70	79	86	92	96	98	99	99
55	499	502	504	2.9	3.7	1	1	1	3	6	10	16	23	32	41	51	62	71	80	88	93	97	99	99
60	500	503	505	2.7	3.7	1	1	1	2	3	6	11	17	24	32	42	52	63	73	82	90	95	98	99
65	501	504	506	2.6	3.7	1	1	1	1	2	4	7	11	17	25	33	43	54	65	75	85	92	97	99
70	502	505	507	2.4	3.7	1	1	1	1	1	2	4	8	12	18	25	34	45	56	68	79	88	96	99
75	503	506	508	2.3	3.7	1	1	1	1	1	1	3	5	8	12	18	26	36	47	59	71	83	93	99
80	504	507	510	2.1	3.7	1	1	1	1	1	1	2	3	5	8	13	19	27	38	50	63	77	89	98
85	506	509	511	1.8	3.7	1	1	1	1	1	1	1	1	2	3	6	9	14	22	32	45	60	78	93
90	508	511	513	1.5	3.7	1	1	1	1	1	1	1	1	1	1	2	4	6	11	17	27	42	62	85
95	511	513	516	1.1	3.7	1	1	1	1	1	1	1	1	1	1	1	1	1	3	5	10	18	34	63

B

Percentile	Achievement Norm Score			Winter-Spring Cond. Growth		Spring Percentile and Score																		
	Fall	Winter	Spring	Mean	SD	5	10	15	20	25	30	35	40	45	50	55	60	65	70	75	80	85	90	95
	485	489	490	2.9	3.3	490	493	495	497	498	499	500	501	502	503	504	505	506	507	508	510	511	513	516
5	485	489	490	2.9	3.3	33	66	84	92	97	99	99	99	99	99	99	99	99	99	99	99	99	99	99
10	488	491	493	2.8	3.3	16	44	66	81	90	95	97	99	99	99	99	99	99	99	99	99	99	99	99
15	490	493	495	2.7	3.3	6	24	44	62	76	85	91	95	98	99	99	99	99	99	99	99	99	99	99
20	492	495	497	2.5	3.3	2	10	24	40	55	68	79	87	92	96	98	99	99	99	99	99	99	99	99
25	493	496	498	2.5	3.3	1	6	16	30	44	58	70	80	87	92	96	98	99	99	99	99	99	99	99
30	494	497	499	2.4	3.3	1	3	10	21	33	47	60	71	80	87	92	96	98	99	99	99	99	99	99
35	495	498	500	2.4	3.3	1	2	6	14	24	36	48	61	71	80	87	93	96	98	99	99	99	99	99
40	496	499	501	2.3	3.3	1	1	3	8	16	26	37	49	61	72	81	88	93	96	98	99	99	99	99
45	497	500	502	2.2	3.3	1	1	2	5	10	18	27	38	50	62	72	81	88	93	97	99	99	99	99
50	498	501	503	2.2	3.3	1	1	1	3	6	11	19	28	39	50	62	73	82	89	94	98	99	99	99
55	499	502	504	2.1	3.3	1	1	1	1	3	7	12	20	29	39	51	62	73	83	90	95	98	99	99
60	500	503	505	2.0	3.3	1	1	1	1	2	4	7	13	20	29	40	51	63	75	85	92	97	99	99
65	501	504	506	2.0	3.3	1	1	1	1	1	2	4	8	13	20	29	40	52	65	77	87	94	98	99
70	502	505	507	1.9	3.3	1	1	1	1	1	1	2	4	8	13	21	30	41	54	67	80	90	97	99
75	503	506	508	1.8	3.3	1	1	1	1	1	1	1	2	5	8	14	21	31	43	57	71	84	94	99
80	504	507	510	1.8	3.3	1	1	1	1	1	1	1	1	3	5	8	14	22	32	46	61	77	90	98
85	506	509	511	1.7	3.3	1	1	1	1	1	1	1	1	1	1	3	5	9	15	25	39	57	77	94
90	508	511	513	1.5	3.3	1	1	1	1	1	1	1	1	1	1	1	1	3	6	11	20	35	57	85
95	511	513	516	1.4	3.3	1	1	1	1	1	1	1	1	1	1	1	1	1	2	4	8	17	35	68

C

Percentile	Achievement Norm Score			Fall-Spring Cond. Growth		Spring Percentile and Score																			
	Fall	Winter	Spring	Mean	SD	5	10	15	20	25	30	35	40	45	50	55	60	65	70	75	80	85	90	95	
	485	489	490	7.5	4.5	490	493	495	497	498	499	500	501	502	503	504	505	506	507	508	510	511	513	516	
5	485	489	490	7.5	4.5	33	57	73	83	89	93	96	97	99	99	99	99	99	99	99	99	99	99	99	
10	488	491	493	6.9	4.5	16	36	52	65	75	82	88	92	95	97	98	99	99	99	99	99	99	99	99	
15	490	493	495	6.6	4.5	9	23	38	51	62	71	79	85	89	93	95	97	98	99	99	99	99	99	99	
20	492	495	497	6.2	4.5	4	14	25	37	48	58	67	75	81	86	91	94	96	98	99	99	99	99	99	
25	493	496	498	6.0	4.5	3	10	20	30	41	51	60	69	76	82	87	91	94	97	98	99	99	99	99	
30	494	497	499	5.9	4.5	2	7	15	24	34	44	53	62	70	77	83	88	92	95	97	99	99	99	99	
35	495	498	500	5.7	4.5	1	5	11	19	27	37	46	55	63	71	78	84	89	93	96	98	99	99	99	
40	496	499	501	5.5	4.5	1	3	8	14	22	30	39	48	56	65	72	79	85	90	94	97	98	99	99	
45	497	500	502	5.3	4.5	1	2	6	11	17	24	32	40	49	58	66	73	80	86	91	95	98	99	99	
50	498	501	503	5.2	4.5	1	1	4	8	13	19	26	34	42	50	59	67	75	82	88	93	96	99	99	
55	499	502	504	5.0	4.5	1	1	3	5	9	14	20	27	35	43	52	60	69	77	84	90	95	98	99	
60	500	503	505	4.8	4.5	1	1	2	4	7	11	16	22	28	36	44	53	62	71	79	86	92	97	99	
65	501	504	506	4.6	4.5	1	1	1	2	5	8	12	17	23	30	37	46	55	64	73	82	89	95	99	
70	502	505	507	4.5	4.5	1	1	1	2	3	5	8	12	18	24	31	39	48	57	67	76	85	93	98	
75	503	506	508	4.3	4.5	1	1	1	1	2	4	6	9	13	18	25	32	40	50	60	70	81	90	97	
80	504	507	510	4.1	4.5	1	1	1	1	1	2	4	6	10	14	19	26	34	43	53	64	75	87	96	
85	506	509	511	3.8	4.5	1	1	1	1	1	1	2	3	5	7	11	16	22	29	38	50	63	77	91	
90	508	511	513	3.4	4.5	1	1	1	1	1	1	1	1	2	4	6	8	12	18	26	35	48	65	84	
95	511	513	516	2.9	4.5	1	1	1	1	1	1	1	1	1	1	1	2	3	5	7	11	18	28	43	68

Table 3.5. Snapshot of Norms—Language Comprehension, Grade 2

A

Percentile	Achievement Norm Score			Fall-Winter Cond. Growth		Winter Percentile and Score																			
	Fall	Winter	Spring	Mean	SD	5	10	15	20	25	30	35	40	45	50	55	60	65	70	75	80	85	90	95	
	5	490	491	492	3.1	3.4	31	62	80	90	95	97	99	99	99	99	99	99	99	99	99	99	99	99	99
10	492	494	495	2.9	3.4	15	41	62	77	86	92	96	98	99	99	99	99	99	99	99	99	99	99	99	99
15	494	496	497	2.7	3.4	6	23	41	58	72	82	89	93	96	98	99	99	99	99	99	99	99	99	99	99
20	496	497	498	2.5	3.4	2	10	23	38	52	65	75	83	89	94	96	98	99	99	99	99	99	99	99	99
25	497	499	499	2.4	3.4	1	6	16	28	42	55	66	76	84	90	94	97	98	99	99	99	99	99	99	99
30	498	500	500	2.2	3.4	1	4	10	20	32	44	56	67	77	84	90	94	97	98	99	99	99	99	99	99
35	499	501	502	2.1	3.4	1	2	6	14	23	34	46	57	68	77	84	90	94	97	99	99	99	99	99	99
40	500	502	503	2.0	3.4	1	1	4	9	16	25	36	47	58	68	77	85	91	95	97	99	99	99	99	99
45	501	503	504	1.9	3.4	1	1	2	5	10	18	26	37	48	58	69	78	85	91	95	98	99	99	99	99
50	502	504	504	1.8	3.4	1	1	1	3	6	12	19	27	37	48	59	69	79	86	92	96	99	99	99	99
55	503	505	505	1.7	3.4	1	1	1	2	4	7	12	19	28	38	48	60	70	80	88	94	97	99	99	99
60	504	505	506	1.6	3.4	1	1	1	1	2	4	8	13	20	28	38	49	61	72	82	90	95	99	99	99
65	505	506	507	1.4	3.4	1	1	1	1	1	2	5	8	13	20	29	39	50	62	74	84	92	98	99	99
70	506	507	508	1.3	3.4	1	1	1	1	1	1	3	5	9	14	21	29	40	52	65	77	88	96	99	99
75	507	509	510	1.2	3.4	1	1	1	1	1	1	1	1	3	5	9	14	21	30	41	54	68	82	92	99
80	508	510	511	1.1	3.4	1	1	1	1	1	1	1	2	3	5	9	14	22	32	44	59	74	88	98	99
85	509	511	512	1.0	3.4	1	1	1	1	1	1	1	1	2	3	5	9	15	23	34	48	65	82	96	99
90	511	513	514	1.0	3.4	1	1	1	1	1	1	1	1	1	2	3	6	10	18	28	44	65	88	99	99
95	514	516	517	1.0	3.4	1	1	1	1	1	1	1	1	1	1	1	1	2	4	9	18	35	65	99	99

B

Percentile	Achievement Norm Score			Winter-Spring Cond. Growth		Spring Percentile and Score																			
	Fall	Winter	Spring	Mean	SD	5	10	15	20	25	30	35	40	45	50	55	60	65	70	75	80	85	90	95	
	5	490	491	492	2.2	3.8	37	66	82	90	95	97	99	99	99	99	99	99	99	99	99	99	99	99	99
10	492	494	495	1.9	3.8	15	38	58	72	82	89	93	96	98	99	99	99	99	99	99	99	99	99	99	99
15	494	496	497	1.7	3.8	7	22	39	54	67	77	85	90	94	96	98	99	99	99	99	99	99	99	99	99
20	496	497	498	1.6	3.8	4	16	30	45	58	70	79	86	91	94	97	98	99	99	99	99	99	99	99	99
25	497	499	499	1.4	3.8	1	7	16	27	40	51	62	72	80	86	91	95	97	98	99	99	99	99	99	99
30	498	500	500	1.3	3.8	1	4	11	20	31	42	53	64	73	80	87	91	95	97	99	99	99	99	99	99
35	499	501	502	1.1	3.8	1	3	7	14	23	33	44	54	64	73	81	87	92	95	98	99	99	99	99	99
40	500	502	503	1.0	3.8	1	1	4	9	16	25	35	45	55	65	74	81	88	93	96	98	99	99	99	99
45	501	503	504	1.0	3.8	1	1	3	6	11	18	26	36	46	56	66	74	82	89	93	97	99	99	99	99
50	502	504	504	1.0	3.8	1	1	2	4	7	13	19	27	37	46	56	66	75	83	90	95	98	99	99	99
55	503	505	505	1.0	3.8	1	1	1	2	5	8	13	20	28	37	47	57	67	77	85	92	96	99	99	99
60	504	505	506	1.0	3.8	1	1	1	2	5	8	13	20	28	37	47	57	67	77	85	92	96	99	99	99
65	505	506	507	1.0	3.8	1	1	1	1	3	5	9	14	21	29	38	48	58	69	79	87	94	98	99	99
70	506	507	508	1.0	3.8	1	1	1	1	2	3	6	9	15	21	29	39	49	60	71	82	90	96	99	99
75	507	509	510	1.0	3.8	1	1	1	1	1	1	2	4	6	10	15	22	31	41	53	66	79	91	98	99
80	508	510	511	1.0	3.8	1	1	1	1	1	1	1	2	4	7	10	16	23	32	44	57	72	86	96	99
85	509	511	512	1.0	3.8	1	1	1	1	1	1	1	1	1	2	4	7	11	17	24	35	48	63	80	94
90	511	513	514	1.0	3.8	1	1	1	1	1	1	1	1	1	2	4	7	12	19	30	45	64	86	99	99
95	514	516	517	1.0	3.8	1	1	1	1	1	1	1	1	1	1	1	2	3	6	11	20	36	65	99	99

C

Percentile	Achievement Norm Score			Fall-Spring Cond. Growth		Spring Percentile and Score																			
	Fall	Winter	Spring	Mean	SD	5	10	15	20	25	30	35	40	45	50	55	60	65	70	75	80	85	90	95	
	5	490	491	492	4.6	4.4	27	51	67	78	86	91	94	96	98	99	99	99	99	99	99	99	99	99	99
10	492	494	495	4.3	4.4	16	36	53	66	75	83	88	92	95	97	98	99	99	99	99	99	99	99	99	99
15	494	496	497	4.0	4.4	9	23	38	51	62	72	79	85	90	93	95	97	98	99	99	99	99	99	99	99
20	496	497	498	3.6	4.4	4	13	25	36	47	58	67	75	81	86	91	94	96	98	99	99	99	99	99	99
25	497	499	499	3.5	4.4	3	10	19	30	40	50	60	68	76	82	87	91	94	96	98	99	99	99	99	99
30	498	500	500	3.3	4.4	2	7	14	23	33	43	52	61	69	76	82	88	92	95	97	99	99	99	99	99
35	499	501	502	3.1	4.4	1	5	11	18	26	36	45	54	62	70	77	83	88	92	95	98	99	99	99	99
40	500	502	503	3.0	4.4	1	3	8	14	21	29	37	46	55	63	71	78	84	89	93	96	98	99	99	99
45	501	503	504	2.8	4.4	1	2	5	10	16	23	31	39	47	56	64	72	79	85	91	95	97	99	99	99
50	502	504	504	2.6	4.4	1	1	4	7	12	17	24	32	40	49	57	66	73	81	87	92	96	99	99	99
55	503	505	505	2.5	4.4	1	1	2	5	8	13	19	26	33	41	50	58	67	75	82	89	94	98	99	99
60	504	505	506	2.3	4.4	1	1	1	3	6	9	14	20	27	34	42	51	60	69	77	85	91	96	99	99
65	505	506	507	2.2	4.4	1	1	1	2	4	7	10	15	21	27	35	43	52	62	71	80	88	95	99	99
70	506	507	508	2.0	4.4	1	1	1	1	3	5	7	11	16	22	28	36	45	54	64	74	84	92	98	99
75	507	509	510	1.8	4.4	1	1	1	1	2	3	5	8	12											

Table 3.6. Snapshot of Norms—Language Comprehension, Grade 3

A

Percentile	Achievement Norm Score			Fall-Winter Cond. Growth		Winter Percentile and Score																		
	Fall	Winter	Spring	Mean	SD	5	10	15	20	25	30	35	40	45	50	55	60	65	70	75	80	85	90	95
						494	496	498	499	501	502	503	503	504	505	506	507	508	509	510	511	513	514	517
5	493	494	494	1.8	3.4	37	66	82	91	95	98	99	99	99	99	99	99	99	99	99	99	99	99	99
10	496	496	496	1.6	3.4	13	35	55	70	81	88	93	96	98	99	99	99	99	99	99	99	99	99	99
15	497	498	498	1.5	3.4	8	25	44	60	72	82	88	93	96	98	99	99	99	99	99	99	99	99	99
20	499	499	500	1.3	3.4	3	12	24	39	52	64	74	82	88	93	96	98	99	99	99	99	99	99	99
25	500	501	501	1.2	3.4	1	7	17	29	42	54	65	74	82	88	93	96	98	99	99	99	99	99	99
30	501	502	502	1.2	3.4	1	4	11	20	31	43	55	65	74	82	88	92	96	98	99	99	99	99	99
35	502	503	503	1.1	3.4	1	2	7	14	23	33	44	55	65	74	82	88	93	96	98	99	99	99	99
40	503	503	504	1.0	3.4	1	1	4	9	15	24	34	44	55	65	74	82	88	93	96	98	99	99	99
45	504	504	505	1.0	3.4	1	1	2	5	10	16	24	34	44	54	64	73	82	88	93	97	99	99	99
50	504	505	506	1.0	3.4	1	1	2	5	10	16	24	34	44	54	64	73	82	88	93	97	99	99	99
55	505	506	507	1.0	3.4	1	1	1	3	6	11	17	25	34	43	54	64	74	82	88	93	94	98	99
60	506	507	508	1.0	3.4	1	1	1	2	3	6	11	17	24	33	43	54	64	74	83	90	96	99	99
65	507	508	509	1.0	3.4	1	1	1	1	2	4	7	11	17	24	33	43	54	65	76	85	93	97	99
70	508	509	510	1.0	3.4	1	1	1	1	1	2	4	7	11	17	24	33	43	54	66	78	88	95	99
75	509	510	511	1.0	3.4	1	1	1	1	1	1	2	4	7	11	16	24	33	44	56	69	82	92	98
80	510	511	512	1.0	3.4	1	1	1	1	1	1	1	2	4	7	11	16	24	33	45	59	74	87	97
85	511	513	514	1.0	3.4	1	1	1	1	1	1	1	1	2	4	6	10	16	24	35	48	64	81	95
90	513	514	515	1.0	3.4	1	1	1	1	1	1	1	1	1	2	4	6	11	18	28	43	63	86	99
95	515	517	518	1.0	3.4	1	1	1	1	1	1	1	1	1	1	2	4	7	13	24	42	71	99	99

B

Percentile	Achievement Norm Score			Winter-Spring Cond. Growth		Spring Percentile and Score																		
	Fall	Winter	Spring	Mean	SD	5	10	15	20	25	30	35	40	45	50	55	60	65	70	75	80	85	90	95
						494	496	498	500	501	502	503	504	505	506	507	508	509	510	511	512	514	515	518
5	493	494	494	1.7	3.9	30	57	74	85	91	95	97	98	99	99	99	99	99	99	99	99	99	99	99
10	496	496	496	1.5	3.9	16	38	57	71	81	88	92	95	97	99	99	99	99	99	99	99	99	99	99
15	497	498	498	1.3	3.9	7	22	38	53	66	76	83	89	93	96	97	99	99	99	99	99	99	99	99
20	499	499	500	1.2	3.9	4	16	30	44	57	68	77	84	89	93	96	97	99	99	99	99	99	99	99
25	500	501	501	1.0	3.9	2	7	16	27	38	50	60	70	78	84	89	93	96	98	99	99	99	99	99
30	501	502	502	1.0	3.9	1	4	11	20	30	40	51	61	70	78	84	89	93	96	98	99	99	99	99
35	502	503	503	1.0	3.9	1	3	7	14	22	32	42	52	61	70	78	85	90	94	97	98	99	99	99
40	503	503	504	1.0	3.9	1	3	7	14	22	32	42	52	61	70	78	85	90	94	97	98	99	99	99
45	504	504	505	1.0	3.9	1	2	5	9	16	24	33	42	52	62	70	78	85	90	94	97	99	99	99
50	504	505	506	1.0	3.9	1	1	3	6	11	17	25	34	43	52	62	71	79	86	91	95	98	99	99
55	505	506	507	1.0	3.9	1	1	2	4	7	12	18	25	34	43	53	62	72	80	87	93	97	99	99
60	506	507	508	1.0	3.9	1	1	1	2	4	8	13	19	26	34	43	53	63	73	81	89	94	98	99
65	507	508	509	1.0	3.9	1	1	1	1	3	5	8	13	19	26	35	44	54	64	74	84	91	97	99
70	508	509	510	1.0	3.9	1	1	1	1	2	3	5	9	13	19	26	35	45	55	66	77	87	94	99
75	509	510	511	1.0	3.9	1	1	1	1	1	2	3	6	9	13	19	27	36	46	58	70	81	91	98
80	510	511	512	1.0	3.9	1	1	1	1	1	1	2	3	6	9	14	20	27	37	48	61	74	87	97
85	511	513	514	1.0	3.9	1	1	1	1	1	1	1	1	2	4	6	9	14	21	30	42	57	74	91
90	513	514	515	1.0	3.9	1	1	1	1	1	1	1	1	1	2	4	6	10	15	23	34	48	66	87
95	515	517	518	1.0	3.9	1	1	1	1	1	1	1	1	1	1	2	4	7	13	23	39	66	99	99

C

Percentile	Achievement Norm Score			Fall-Spring Cond. Growth		Spring Percentile and Score																		
	Fall	Winter	Spring	Mean	SD	5	10	15	20	25	30	35	40	45	50	55	60	65	70	75	80	85	90	95
						494	496	498	500	501	502	503	504	505	506	507	508	509	510	511	512	514	515	518
5	493	494	494	2.6	4.3	33	57	73	83	89	93	96	98	99	99	99	99	99	99	99	99	99	99	99
10	496	496	496	2.3	4.3	14	33	49	62	73	81	86	91	94	96	98	99	99	99	99	99	99	99	99
15	497	498	498	2.2	4.3	10	25	41	54	65	74	81	87	91	94	96	98	99	99	99	99	99	99	99
20	499	499	500	2.0	4.3	4	14	25	37	49	59	68	76	82	87	91	94	96	98	99	99	99	99	99
25	500	501	501	1.9	4.3	3	10	19	30	40	51	60	69	76	82	87	91	94	97	98	99	99	99	99
30	501	502	502	1.8	4.3	2	7	14	23	32	42	52	61	69	76	82	88	92	95	97	99	99	99	99
35	502	503	503	1.7	4.3	1	4	10	17	25	34	43	53	61	69	76	83	88	92	95	98	99	99	99
40	503	503	504	1.6	4.3	1	3	7	12	19	27	35	44	53	62	70	77	83	89	93	96	98	99	99
45	504	504	505	1.5	4.3	1	2	4	8	14	20	28	36	45	53	62	70	77	84	89	94	97	99	99
50	504	505	506	1.5	4.3	1	2	4	8	14	20	28	36	45	53	62	70	77	84	89	94	97	99	99
55	505	506	507	1.4	4.3	1	1	3	6	10	15	21	28	36	45	54	62	71	78	85	91	95	98	99
60	506	507	508	1.3	4.3	1	1	2	4	7	11	16	22	29	37	45	54	63	72	80	87	93	97	99
65	507	508	509	1.2	4.3	1	1	1	2	4	7	11	16	22	29	37	46	55	64	73	82	89	95	99
70	508	509	510	1.1	4.3	1	1	1	1	3	5	8	11											

Table 3.7. Snapshot of Norms—Phonological Awareness, Grade K

A

		Winter Percentile and Score																						
Percentile	Achievement Norm Score			Fall-Winter Cond. Growth		5	10	15	20	25	30	35	40	45	50	55	60	65	70	75	80	85	90	95
	Fall	Winter	Spring	Mean	SD	482	485	486	488	489	490	491	492	493	494	495	496	497	498	500	501	502	504	507
5	478	482	484	10.2	6.7	17	29	39	48	55	62	68	73	78	82	85	89	91	94	95	97	98	99	99
10	481	485	487	8.7	6.7	12	22	31	39	47	54	60	66	71	76	80	84	87	90	93	95	97	99	99
15	483	486	489	7.6	6.7	9	18	26	34	41	48	55	60	66	71	76	80	84	88	91	94	96	98	99
20	484	488	491	7.1	6.7	8	16	24	32	39	45	52	58	63	69	74	78	82	86	90	93	95	98	99
25	485	489	492	6.6	6.7	7	15	22	29	36	43	49	55	61	66	71	76	80	85	88	92	95	97	99
30	487	490	493	5.5	6.7	5	12	18	24	31	37	43	49	55	61	66	71	76	81	85	89	93	96	98
35	488	491	494	5.0	6.7	5	10	16	22	28	34	40	46	52	58	63	69	74	79	83	88	92	95	98
40	489	492	495	4.5	6.7	4	9	14	20	26	32	38	44	49	55	61	66	72	77	82	86	91	95	98
45	490	493	496	4.0	6.7	3	8	13	18	24	29	35	41	47	52	58	64	69	75	80	85	89	94	97
50	491	494	497	3.4	6.7	3	7	11	16	22	27	32	38	44	49	55	61	67	72	78	83	88	93	97
55	492	495	498	2.9	6.7	2	6	10	15	20	25	30	35	41	47	52	58	64	70	75	81	87	92	96
60	493	496	499	2.4	6.7	2	5	9	13	18	22	27	33	38	44	50	55	61	67	73	79	85	91	96
65	494	497	500	1.9	6.7	2	5	8	12	16	20	25	30	36	41	47	53	58	65	71	77	83	89	95
70	495	498	502	1.3	6.7	1	4	7	10	14	18	23	28	33	38	44	50	56	62	68	75	81	88	94
75	496	500	503	1.0	6.7	1	3	6	9	13	17	21	25	30	36	41	47	53	59	66	72	79	86	94
80	497	501	504	1.0	6.7	1	3	5	8	11	15	19	23	28	33	38	44	50	56	63	70	77	85	93
85	499	502	506	1.0	6.7	1	2	4	6	9	12	15	19	23	28	33	38	44	51	58	65	73	81	90
90	501	504	508	1.0	6.7	1	1	3	5	7	9	12	15	19	23	28	33	39	45	52	59	68	77	88
95	504	507	510	1.0	6.7	1	1	2	3	4	6	8	11	14	17	21	26	31	37	43	51	60	70	83

B

		Spring Percentile and Score																						
Percentile	Achievement Norm Score			Winter-Spring Cond. Growth		5	10	15	20	25	30	35	40	45	50	55	60	65	70	75	80	85	90	95
	Fall	Winter	Spring	Mean	SD	484	487	489	491	492	493	494	495	496	497	498	499	500	502	503	504	506	508	510
5	478	482	484	8.4	6.6	18	32	43	52	60	67	73	78	82	86	89	92	94	96	97	98	99	99	99
10	481	485	487	7.1	6.6	12	23	33	42	50	57	64	69	75	79	83	87	90	93	95	97	98	99	99
15	483	486	489	6.6	6.6	11	21	30	39	47	54	60	66	72	77	81	85	88	91	94	96	98	99	99
20	484	488	491	5.8	6.6	8	16	24	32	40	47	53	60	66	71	76	80	84	88	91	94	96	98	99
25	485	489	492	5.4	6.6	7	14	22	29	36	43	50	56	62	68	73	78	82	86	90	93	96	98	99
30	487	490	493	4.9	6.6	6	12	19	26	33	40	47	53	59	65	70	75	80	84	88	92	95	97	99
35	488	491	494	4.5	6.6	5	11	17	24	30	37	43	49	56	61	67	72	77	82	86	90	94	97	99
40	489	492	495	4.1	6.6	4	9	15	21	27	34	40	46	52	58	64	69	75	80	84	89	93	96	99
45	490	493	496	3.6	6.6	3	8	13	19	24	30	36	43	49	55	61	66	72	77	82	87	91	95	98
50	491	494	497	3.2	6.6	3	7	11	16	22	27	33	39	45	51	57	63	69	75	80	85	90	94	98
55	492	495	498	2.8	6.6	2	6	10	14	19	25	30	36	42	48	54	60	66	72	77	83	88	93	97
60	493	496	499	2.4	6.6	2	5	8	12	17	22	27	33	38	44	50	56	63	69	75	81	86	92	97
65	494	497	500	1.9	6.6	1	4	7	11	15	20	24	30	35	41	47	53	59	66	72	78	85	91	96
70	495	498	502	1.5	6.6	1	3	6	9	13	17	22	27	32	38	43	50	56	62	69	76	82	89	95
75	496	500	503	1.0	6.6	1	2	4	7	10	13	17	21	26	31	37	43	49	56	63	70	78	85	93
80	497	501	504	1.0	6.6	1	2	3	6	8	11	15	19	23	28	34	39	45	52	59	67	75	83	92
85	499	502	506	1.0	6.6	1	1	3	5	7	10	13	17	21	25	30	36	42	49	56	64	72	81	91
90	501	504	508	1.0	6.6	1	1	2	3	5	7	10	13	16	20	25	30	35	42	49	57	66	76	87
95	504	507	510	1.0	6.6	1	1	1	2	3	4	6	8	11	14	17	21	26	32	39	47	56	67	81

C

		Spring Percentile and Score																						
Percentile	Achievement Norm Score			Fall-Spring Cond. Growth		5	10	15	20	25	30	35	40	45	50	55	60	65	70	75	80	85	90	95
	Fall	Winter	Spring	Mean	SD	484	487	489	491	492	493	494	495	496	497	498	499	500	502	503	504	506	508	510
5	478	482	484	14.2	7.2	14	25	34	42	50	56	62	67	72	77	81	84	88	90	93	95	97	98	99
10	481	485	487	12.4	7.2	11	20	28	36	43	49	55	61	66	71	76	80	84	87	90	93	96	98	99
15	483	486	489	11.2	7.2	9	17	24	32	38	45	51	57	62	67	72	76	81	85	88	91	94	97	99
20	484	488	491	10.6	7.2	8	15	23	30	36	43	49	54	60	65	70	75	79	83	87	90	94	96	99
25	485	489	492	10.0	7.2	7	14	21	28	34	40	46	52	58	63	68	73	77	82	86	89	93	96	98
30	487	490	493	8.9	7.2	6	12	18	24	30	36	42	48	53	59	64	69	74	79	83	87	91	95	98
35	488	491	494	8.3	7.2	5	11	16	22	28	34	40	45	51	56	62	67	72	77	82	86	90	94	98
40	489	492	495	7.7	7.2	5	10	15	21	26	32	37	43	49	54	59	65	70	75	80	85	89	93	97
45	490	493	496	7.1	7.2	4	9	14	19	24	30	35	41	46	52	57	63	68	73	78	83	88	93	97
50	491	494	497	6.5	7.2	4	8	13	18	23	28	33	39	44	50	55	61	66	71	77	82	87	92	96
55	492	495	498	5.9	7.2	3	7	11	16	21	26	31	37	42	47	53	58	64	69	75	80	86	91	96
60	493	496	499	5.3	7.2	3	6	10	15	19	24	29	34	40	45	51	56	62	67	73	79	84	90	95
65	494	497	500	4.7	7.2	2	6	9	14	18	23	27	32	37	43	48	54	60	65	71	77	83	89	95
70	495	498	502	4.1	7.2	2	5	9	12	16	21	25	30	35	41	46	52	57	63	69	75	82	88	94
75	496	500	503	3.5	7.2	2	5	8	11	15	19	24	28	33	38	44	49	55	61	67	73	80	87	93
80	497	501	504	3.0	7.2	2	4	7	10	14	18	22	26	31	36	42	47	53	59	65	72	78	85	93
85	499	502	506	1.8	7.2	1	3	6	8	11	15	19	23	27	32	37	43	48	54	61	68	75	83	91
90	501	504	508	1.0	7.2	1	2	4	7	9	12	16	20	24	28	33	38	44	50	56	63	71	80	89
95	504	507	510	1.0	7.2	1	2	3	5	7	9	12	15	19	23	27	32	37	43	50	57	65	74	85

Table 3.8. Snapshot of Norms—Phonological Awareness, Grade 1

A

Percentile	Achievement Norm Score		Fall-Winter Cond. Growth		Winter Percentile and Score																			
	Fall	Winter	Spring	Mean	SD	5	10	15	20	25	30	35	40	45	50	55	60	65	70	75	80	85	90	95
	5	485	488	490	8.6	6.4	488	491	493	495	496	497	498	499	500	501	502	503	504	505	506	508	509	511
10	488	491	493	7.3	6.4	13	25	36	45	53	60	67	73	78	82	86	89	92	94	96	97	99	99	99
15	490	493	495	6.5	6.4	10	20	29	38	46	53	60	66	72	77	81	85	89	92	94	96	98	99	99
20	491	495	496	6.1	6.4	8	17	26	34	42	50	56	63	68	74	79	83	87	90	93	95	97	99	99
25	493	496	498	5.3	6.4	6	13	20	28	35	42	49	56	62	67	73	78	82	86	90	93	96	98	99
30	494	497	499	4.8	6.4	5	11	18	25	32	39	45	52	58	64	70	75	80	84	88	92	95	97	99
35	495	498	500	4.4	6.4	4	10	16	22	29	35	42	48	54	61	66	72	77	82	86	90	94	97	99
40	496	499	501	4.0	6.4	3	8	14	19	26	32	38	45	51	57	63	69	74	79	84	89	93	96	99
45	497	500	502	3.6	6.4	3	7	12	17	23	29	35	41	47	53	59	65	71	77	82	87	91	95	98
50	498	501	503	3.2	6.4	2	6	10	15	20	26	31	37	43	50	56	62	68	74	79	85	90	94	98
55	499	502	504	2.8	6.4	2	5	8	13	18	23	28	34	40	46	52	58	65	71	77	83	88	93	97
60	500	503	505	2.4	6.4	1	4	7	11	15	20	25	31	36	42	48	55	61	67	74	80	86	92	97
65	501	504	506	1.9	6.4	1	3	6	9	13	18	22	27	33	39	45	51	57	64	71	77	84	90	96
70	502	505	507	1.5	6.4	1	3	5	8	11	15	20	24	30	35	41	47	54	61	67	74	82	89	95
75	503	506	509	1.1	6.4	1	2	4	7	10	13	17	22	27	32	38	44	50	57	64	71	79	87	94
80	504	508	510	1.0	6.4	1	2	3	6	8	11	15	19	24	29	34	40	46	53	61	68	76	85	93
85	506	509	512	1.0	6.4	1	1	2	4	6	8	11	14	18	23	28	33	39	46	53	61	70	80	90
90	508	511	514	1.0	6.4	1	1	1	2	4	6	8	11	14	18	22	27	32	39	46	54	63	74	86
95	511	514	517	1.0	6.4	1	1	1	1	2	3	5	6	9	11	15	19	23	29	35	43	53	64	79

B

Percentile	Achievement Norm Score		Winter-Spring Cond. Growth		Spring Percentile and Score																			
	Fall	Winter	Spring	Mean	SD	5	10	15	20	25	30	35	40	45	50	55	60	65	70	75	80	85	90	95
	5	485	488	490	6.6	6.5	490	493	495	496	498	499	500	501	502	503	504	505	506	507	509	510	512	514
10	488	491	493	5.5	6.5	14	27	38	48	56	63	70	75	80	84	88	91	93	95	97	98	99	99	99
15	490	493	495	4.8	6.5	10	21	31	40	48	56	63	69	74	79	83	87	90	93	95	97	98	99	99
20	491	495	496	4.1	6.5	7	16	24	32	40	48	55	61	67	73	78	82	86	90	93	95	97	99	99
25	493	496	498	3.8	6.5	6	13	21	29	36	44	51	57	64	69	75	80	84	88	91	94	97	98	99
30	494	497	499	3.4	6.5	5	11	18	26	33	40	47	54	60	66	72	77	82	86	90	93	96	98	99
35	495	498	500	3.0	6.5	4	9	16	22	29	36	43	50	56	62	68	74	79	84	88	92	95	97	99
40	496	499	501	2.7	6.5	3	8	14	20	26	33	39	46	52	58	64	70	76	81	86	90	94	97	99
45	497	500	502	2.3	6.5	2	7	11	17	23	29	35	42	48	54	61	67	73	78	83	88	92	96	99
50	498	501	503	2.0	6.5	2	5	10	15	20	26	32	38	44	50	57	63	69	75	81	86	91	95	98
55	499	502	504	1.6	6.5	2	4	8	12	17	23	28	34	40	47	53	59	66	72	78	84	89	94	98
60	500	503	505	1.3	6.5	1	4	7	11	15	20	25	31	36	43	49	55	62	68	75	81	87	93	97
65	501	504	506	1.0	6.5	1	3	6	9	13	17	22	27	33	39	45	51	58	65	72	78	85	91	96
70	502	505	507	1.0	6.5	1	2	4	7	11	15	19	24	29	35	41	47	54	61	68	75	82	89	96
75	503	506	509	1.0	6.5	1	2	4	6	9	13	17	21	26	31	37	43	50	57	64	72	80	87	95
80	504	508	510	1.0	6.5	1	1	2	4	6	9	12	16	20	25	30	36	42	49	57	65	74	83	92
85	506	509	512	1.0	6.5	1	1	2	3	5	7	10	13	17	22	27	32	38	45	53	61	70	80	90
90	508	511	514	1.0	6.5	1	1	1	2	3	5	7	10	13	16	21	25	31	38	45	53	63	74	87
95	511	514	517	1.0	6.5	1	1	1	1	2	3	4	5	8	10	13	17	21	27	34	42	51	63	79

C

Percentile	Achievement Norm Score		Fall-Spring Cond. Growth		Spring Percentile and Score																			
	Fall	Winter	Spring	Mean	SD	5	10	15	20	25	30	35	40	45	50	55	60	65	70	75	80	85	90	95
	5	485	488	490	11.2	7.1	18	30	41	50	58	64	70	75	80	84	87	90	92	94	96	97	99	99
10	488	491	493	9.8	7.1	12	23	32	41	49	56	62	68	73	77	81	85	88	91	94	96	97	99	99
15	490	493	495	8.8	7.1	9	19	27	35	43	50	56	62	67	72	77	81	85	89	92	94	96	98	99
20	491	495	496	8.4	7.1	8	17	25	32	40	47	53	59	65	70	75	79	83	87	90	93	96	98	99
25	493	496	498	7.4	7.1	6	13	20	27	34	41	47	53	59	64	70	75	79	84	88	91	94	97	99
30	494	497	499	7.0	7.1	5	12	18	25	31	38	44	50	56	62	67	72	77	82	86	90	93	96	99
35	495	498	500	6.5	7.1	5	10	16	22	29	35	41	47	53	59	64	70	75	80	84	88	92	96	98
40	496	499	501	6.1	7.1	4	9	14	20	26	32	38	44	50	56	61	67	72	77	82	87	91	95	98
45	497	500	502	5.6	7.1	3	8	13	18	24	29	35	41	47	53	58	64	70	75	80	85	90	94	98
50	498	501	503	5.1	7.1	3	7	11	16	21	27	32	38	44	50	55	61	67	73	78	83	88	93	97
55	499	502	504	4.7	7.1	2	6	10	14	19	24	30	35	41	47	52	58	64	70	76	81	87	92	97
60	500	503	505	4.2	7.1	2	5	9	13	17	22	27	33	38	44	49	55	61	67	73	79	85	91	96
65	501	504	506	3.7	7.1	2	4	8	11	15	20	25	30	35	41	46	52	58	65	71	77	83	90	95
70	502	505	507	3.3	7.1	1	4	7	10	14	18	22	27	32	38	43	49	55	62	68	75	81	88	95
75	503	506	509	2.8	7.1	1	3	6	9	12	16	20	25	30	35	41	46	52	59	65	72	79	86	94
80	504	508	510	2.3	7.1	1	3	5	8	11	14	18	23	27	32	38	43	49	56	63	70	77	85	93
85	506	509	512	1.4	7.1	1	2	4	6	8	11	14	18	22	27	32	38	43	50	57	64	72	81	90
90	508	511	514	1.0	7.1	1	1	3	4	6	9	11	15	18	22	27	32	38	44	51	58	67	77	87
95	511	514	517	1.0	7.1	1	1	1	2	4	6	8	10	13	16	20	24	29	35	42	49	58	69	82

Table 3.9. Snapshot of Norms—Phonological Awareness, Grade 2

A

		Winter Percentile and Score																						
Percentile	Achievement Norm Score			Fall-Winter Cond. Growth		5	10	15	20	25	30	35	40	45	50	55	60	65	70	75	80	85	90	95
	Fall	Winter	Spring	Mean	SD	491	494	496	497	499	500	501	502	503	504	505	506	507	508	509	510	512	514	517
5	489	491	492	7.2	6.3	21	36	48	58	66	72	78	82	86	89	92	94	96	97	98	99	99	99	99
10	492	494	495	6.0	6.3	14	26	37	46	55	62	68	74	79	83	86	90	92	94	96	98	99	99	99
15	494	496	497	5.2	6.3	10	20	30	39	47	54	61	67	73	78	82	86	89	92	94	96	98	99	99
20	496	497	498	4.4	6.3	7	16	24	32	39	47	54	60	66	71	76	81	85	89	92	95	97	98	99
25	497	499	500	4.0	6.3	6	13	21	29	36	43	50	56	62	68	73	78	83	87	90	93	96	98	99
30	498	500	501	3.6	6.3	5	11	18	25	32	39	46	52	59	65	70	75	80	85	89	92	95	98	99
35	499	501	502	3.2	6.3	4	10	16	22	29	36	42	49	55	61	67	72	77	82	87	91	94	97	99
40	500	502	503	2.8	6.3	3	8	14	20	26	32	39	45	51	57	63	69	75	80	85	89	93	96	99
45	501	503	504	2.4	6.3	3	7	12	17	23	29	35	41	47	54	60	66	71	77	82	87	91	95	98
50	502	504	505	2.0	6.3	2	6	10	15	20	26	32	37	44	50	56	62	68	74	80	85	90	94	98
55	503	505	506	1.6	6.3	2	5	8	13	18	23	28	34	40	46	52	58	65	71	77	83	88	93	97
60	504	506	507	1.2	6.3	1	4	7	11	15	20	25	31	36	42	48	55	61	67	74	80	86	92	97
65	505	507	508	1.0	6.3	1	3	6	9	13	17	22	27	33	39	45	51	57	64	71	77	84	90	96
70	506	508	509	1.0	6.3	1	2	5	8	11	15	19	24	29	35	41	47	54	60	67	74	81	88	95
75	507	509	511	1.0	6.3	1	2	4	6	9	13	17	21	26	31	37	43	50	57	64	71	79	86	94
80	508	510	512	1.0	6.3	1	2	3	5	8	11	15	19	23	28	34	40	46	53	60	68	76	84	93
85	510	512	514	1.0	6.3	1	1	2	4	6	8	11	14	18	22	27	32	38	45	53	61	70	79	90
90	512	514	516	1.0	6.3	1	1	1	2	4	5	8	10	13	17	21	26	31	38	45	53	63	73	86
95	514	517	519	1.0	6.3	1	1	1	1	2	4	5	7	10	13	16	20	25	31	38	46	55	67	81

B

		Spring Percentile and Score																						
Percentile	Achievement Norm Score			Winter-Spring Cond. Growth		5	10	15	20	25	30	35	40	45	50	55	60	65	70	75	80	85	90	95
	Fall	Winter	Spring	Mean	SD	492	495	497	498	500	501	502	503	504	505	506	507	508	509	511	512	514	516	519
5	489	491	492	5.7	6.5	22	37	49	59	67	73	79	83	87	90	93	95	96	97	98	99	99	99	99
10	492	494	495	4.6	6.5	14	26	37	47	55	63	69	75	80	84	87	91	93	95	97	98	99	99	99
15	494	496	497	3.9	6.5	10	20	30	39	48	55	62	68	74	79	83	87	90	93	95	97	98	99	99
20	496	497	498	3.6	6.5	8	18	27	36	44	51	58	64	70	76	80	84	88	91	94	96	98	99	99
25	497	499	500	2.9	6.5	6	13	21	28	36	43	50	57	63	69	74	79	84	88	91	94	96	98	99
30	498	500	501	2.5	6.5	5	11	18	25	32	39	46	53	59	65	71	76	81	85	89	93	96	98	99
35	499	501	502	2.2	6.5	4	9	16	22	29	36	42	49	55	62	67	73	78	83	87	91	95	97	99
40	500	502	503	1.8	6.5	3	8	13	19	26	32	39	45	51	58	64	70	75	80	85	90	93	97	99
45	501	503	504	1.5	6.5	2	6	11	17	22	29	35	41	47	54	60	66	72	78	83	88	92	96	99
50	502	504	505	1.1	6.5	2	5	9	14	20	25	31	37	44	50	56	62	69	74	80	86	90	95	98
55	503	505	506	1.0	6.5	2	4	8	12	17	22	28	34	40	46	52	59	65	71	77	83	89	94	98
60	504	506	507	1.0	6.5	1	3	7	10	15	19	25	30	36	42	48	55	61	68	74	81	87	92	97
65	505	507	508	1.0	6.5	1	3	5	9	12	17	22	27	32	38	44	51	57	64	71	78	84	91	96
70	506	508	509	1.0	6.5	1	2	4	7	11	14	19	24	29	34	40	47	53	60	67	75	82	89	95
75	507	509	511	1.0	6.5	1	2	4	6	9	12	16	21	25	31	37	43	49	56	64	71	79	87	94
80	508	510	512	1.0	6.5	1	1	3	5	7	10	14	18	22	27	33	39	45	52	60	68	76	85	93
85	510	512	514	1.0	6.5	1	1	2	3	5	7	10	13	17	21	26	32	38	45	52	60	69	79	90
90	512	514	516	1.0	6.5	1	1	1	2	3	5	7	9	12	16	20	25	30	37	44	53	62	73	86
95	514	517	519	1.0	6.5	1	1	1	1	2	3	4	5	7	10	13	16	21	26	33	41	50	63	78

C

		Spring Percentile and Score																						
Percentile	Achievement Norm Score			Fall-Spring Cond. Growth		5	10	15	20	25	30	35	40	45	50	55	60	65	70	75	80	85	90	95
	Fall	Winter	Spring	Mean	SD	492	495	497	498	500	501	502	503	504	505	506	507	508	509	511	512	514	516	519
5	489	491	492	8.9	7.1	18	32	42	51	59	66	71	76	81	84	88	90	93	95	96	98	99	99	99
10	492	494	495	7.6	7.1	13	24	33	42	50	57	63	69	74	78	82	86	89	92	94	96	98	99	99
15	494	496	497	6.7	7.1	10	19	28	36	44	50	57	63	68	73	78	82	86	89	92	95	97	98	99
20	496	497	498	5.8	7.1	7	15	23	30	37	44	51	57	62	68	73	78	82	86	89	93	95	98	99
25	497	499	500	5.4	7.1	6	14	21	28	35	41	48	54	59	65	70	75	80	84	88	91	94	97	99
30	498	500	501	4.9	7.1	5	12	19	25	32	38	44	51	56	62	68	73	78	82	86	90	94	96	99
35	499	501	502	4.5	7.1	5	10	16	23	29	35	41	47	53	59	65	70	75	80	84	89	92	96	98
40	500	502	503	4.0	7.1	4	9	15	20	26	32	38	44	50	56	62	67	73	78	83	87	91	95	98
45	501	503	504	3.6	7.1	3	8	13	18	24	30	35	41	47	53	59	64	70	75	80	85	90	94	98
50	502	504	505	3.1	7.1	3	7	11	16	22	27	33	38	44	50	56	61	67	73	78	83	89	93	97
55	503	505	506	2.7	7.1	2	6	10	14	19	24	30	35	41	47	53	58	64	70	76	81	87	92	97
60	504	506	507	2.2	7.1	2	5	9	13	17	22	27	32	38	44	49	55	61	67	73	79	85	91	96
65	505	507	508	1.8	7.1	2	4	7	11	15	20	25	30	35	41	46	52	58	64	71	77	83	89	95
70	506	508	509	1.3	7.1	1	4	6	10	14	18	22	27	32	38	43	49	55	61	68	75	81	88	94
75	507	509	511	1.0	7.1	1	3	6	9	12	16	20	25	29	35	40	46	52	58	65	72	79	86	94
80	508	510	512	1.0	7.1	1	3	5	7	10	14	18	22	27	32	37	43	49	55	62	69	77	85	93
85	510	512	514	1.0	7.1	1	2	3	5	8	11	14	18	22	26	31	37	43	49	56	64	72	81	90
90	512	514	516	1.0	7.1	1	1	2	4	6	8	11	14	18	22	26	31	37	43	50	58	66	76	87
95	514	517	519	1.0	7.1	1	1	2	3	4	6	8	11	14	17	21	26	31	37	44	51	60	71	83

Table 3.10. Snapshot of Norms—Phonological Awareness, Grade 3

A

Percentile	Achievement Norm Score			Fall-Winter Cond. Growth		Winter Percentile and Score																			
	Fall	Winter	Spring	Mean	SD	5	10	15	20	25	30	35	40	45	50	55	60	65	70	75	80	85	90	95	
	493	494	493	6.0	6.3	19	33	45	54	62	68	74	79	83	87	90	92	94	96	97	98	99	99	99	
5	493	494	493	6.0	6.3	19	33	45	54	62	68	74	79	83	87	90	92	94	96	97	98	99	99	99	
10	496	496	496	4.8	6.3	12	24	33	42	50	58	64	70	75	80	84	87	90	93	95	97	98	99	99	
15	497	498	498	4.4	6.3	10	21	30	39	47	54	60	66	72	77	81	85	88	91	94	96	98	99	99	
20	499	500	500	3.6	6.3	7	16	24	32	39	46	53	59	65	70	75	80	84	88	91	94	96	98	99	
25	500	501	501	3.2	6.3	6	13	21	28	35	42	49	55	61	67	72	77	82	86	90	93	96	98	99	
30	501	502	502	2.8	6.3	5	11	18	25	32	39	45	52	58	64	69	74	79	84	88	91	95	97	99	
35	502	503	503	2.4	6.3	4	10	16	22	29	35	41	48	54	60	66	71	76	81	86	90	93	96	99	
40	503	504	504	2.1	6.3	3	8	14	19	25	32	38	44	50	56	62	68	73	78	83	88	92	96	98	
45	504	505	505	1.7	6.3	3	7	12	17	22	28	34	40	46	52	58	64	70	76	81	86	91	95	98	
50	505	506	506	1.3	6.3	2	6	10	15	20	25	31	37	42	48	55	61	67	72	78	84	89	93	97	
55	505	507	507	1.3	6.3	2	6	10	15	20	25	31	37	42	48	55	61	67	72	78	84	89	93	97	
60	506	508	508	1.0	6.3	2	5	8	13	17	22	27	33	39	45	51	57	63	69	75	81	87	92	97	
65	507	509	509	1.0	6.3	1	4	7	11	15	19	24	30	35	41	47	53	59	66	72	78	85	91	96	
70	508	510	510	1.0	6.3	1	3	6	9	13	17	21	26	32	37	43	49	56	62	69	76	82	89	95	
75	509	511	512	1.0	6.3	1	2	5	8	11	15	19	23	28	34	39	45	52	58	65	72	80	87	94	
80	511	512	513	1.0	6.3	1	2	3	5	8	11	14	18	22	27	32	38	44	51	58	66	74	83	92	
85	512	514	514	1.0	6.3	1	1	3	4	6	9	12	15	19	24	29	34	40	47	54	62	71	80	90	
90	514	516	516	1.0	6.3	1	1	2	3	4	6	9	11	15	18	23	28	33	39	47	55	64	74	86	
95	516	518	519	1.0	6.3	1	1	1	2	3	4	6	8	11	14	17	22	26	32	39	47	56	68	81	

B

Percentile	Achievement Norm Score			Winter-Spring Cond. Growth		Spring Percentile and Score																			
	Fall	Winter	Spring	Mean	SD	5	10	15	20	25	30	35	40	45	50	55	60	65	70	75	80	85	90	95	
	493	494	493	4.7	6.3	19	34	46	56	64	71	76	81	85	89	91	94	95	97	98	99	99	99	99	
5	493	494	493	4.7	6.3	19	34	46	56	64	71	76	81	85	89	91	94	95	97	98	99	99	99	99	
10	496	496	496	4.0	6.3	14	27	38	48	56	63	70	75	80	84	88	91	93	95	97	98	99	99	99	
15	497	498	498	3.3	6.3	10	21	31	40	48	56	63	69	74	79	83	87	90	93	95	97	98	99	99	
20	499	500	500	2.5	6.3	7	16	24	32	40	48	55	61	67	73	78	82	86	90	93	95	97	99	99	
25	500	501	501	2.1	6.3	6	13	21	29	37	44	51	57	63	69	75	79	84	88	91	94	96	98	99	
30	501	502	502	1.8	6.3	5	11	18	26	33	40	47	53	60	66	71	76	81	86	89	93	96	98	99	
35	502	503	503	1.4	6.3	4	10	16	23	29	36	43	49	56	62	68	73	78	83	88	91	95	97	99	
40	503	504	504	1.0	6.3	3	8	14	20	26	32	39	45	52	58	64	70	75	81	85	90	93	97	99	
45	504	505	505	1.0	6.3	3	7	12	17	23	29	35	41	48	54	60	66	72	78	83	88	92	96	99	
50	505	506	506	1.0	6.3	2	5	10	15	20	26	32	38	44	50	56	63	69	75	80	86	90	95	98	
55	505	507	507	1.0	6.3	2	4	8	12	17	22	28	34	40	46	52	59	65	71	77	83	89	93	98	
60	506	508	508	1.0	6.3	1	4	7	11	15	20	25	30	36	42	48	55	61	68	74	80	87	92	97	
65	507	509	509	1.0	6.3	1	3	6	9	13	17	22	27	32	38	44	51	57	64	71	78	84	91	96	
70	508	510	510	1.0	6.3	1	2	4	7	11	15	19	24	29	35	40	47	53	60	67	74	82	89	95	
75	509	511	512	1.0	6.3	1	2	4	6	9	12	16	21	26	31	37	43	49	56	64	71	79	87	94	
80	511	512	513	1.0	6.3	1	1	3	5	7	10	14	18	22	27	33	39	45	52	60	68	76	84	93	
85	512	514	514	1.0	6.3	1	1	2	3	5	7	10	13	17	21	26	32	38	44	52	60	69	79	90	
90	514	516	516	1.0	6.3	1	1	1	2	3	5	7	9	12	16	20	25	30	37	44	52	62	73	86	
95	516	518	519	1.0	6.3	1	1	1	1	2	3	5	6	9	12	15	19	24	29	36	44	54	66	81	

C

Percentile	Achievement Norm Score			Fall-Spring Cond. Growth		Spring Percentile and Score																			
	Fall	Winter	Spring	Mean	SD	5	10	15	20	25	30	35	40	45	50	55	60	65	70	75	80	85	90	95	
	493	494	493	6.2	6.6	19	32	43	53	60	67	73	78	82	86	89	92	94	96	97	98	99	99	99	
5	493	494	493	6.2	6.6	19	32	43	53	60	67	73	78	82	86	89	92	94	96	97	98	99	99	99	
10	496	496	496	5.1	6.6	12	23	33	42	50	57	63	69	74	79	83	86	90	92	95	96	98	99	99	
15	497	498	498	4.7	6.6	10	20	30	38	46	53	60	65	71	76	80	84	88	91	93	96	97	99	99	
20	499	500	500	3.9	6.6	7	16	24	31	39	46	52	58	64	70	75	79	84	87	91	94	96	98	99	
25	500	501	501	3.5	6.6	6	13	21	28	35	42	49	55	61	66	72	77	81	85	89	92	95	98	99	
30	501	502	502	3.1	6.6	5	12	18	25	32	38	45	51	57	63	69	74	79	83	87	91	94	97	99	
35	502	503	503	2.7	6.6	4	10	16	22	29	35	41	48	54	59	65	71	76	81	85	89	93	96	99	
40	503	504	504	2.3	6.6	4	8	14	20	26	32	38	44	50	56	62	67	73	78	83	88	92	95	98	
45	504	505	505	1.9	6.6	3	7	12	17	23	28	34	40	46	52	58	64	70	75	81	86	90	94	98	
50	505	506	506	1.5	6.6	2	6	10	15	20	25	31	37	43	49	55	60	66	72	78	83	89	93	97	
55	505	507	507	1.5	6.6	2	6	10	15	20	25	31	37	43	49	55	60	66	72	78	83	89	93	97	
60	506	508	508	1.2	6.6	2	5	9	13	18	23	28	33	39	45	51	57	63	69	75	81	87	92	97	
65	507	509	509	1.0	6.6	1	4	7	11	15	20	25	30	36	41	47	53	59	66	72	78	85	90	96	
70	508	510	510	1.0	6.6	1	3	6	9	13	17	22	27	32	38	44	50	56	62	69	76	82	89	95	
75	509	511	512	1.0	6.6	1	3	5	8	11	15	19	24	29	34	40	46	52	59	66	73	80	87	94	
80	511	512	513	1.0	6.6	1	2	3	6	8	11	15	19	23	28	33	39	45	51	59	66	74	83	92	
85	512	514	514	1.0	6.6	1	1	3	5	7	10	13	16	20	25	30	35	41	48	55	63	71	80	90	
90	514	516	516	1.0	6.6	1	1	2	3	5	7	9	12	15	19	24	29	34	40	48	55	64	75	86	
95	516	518	519	1.0	6.6	1	1	1	2	3	5	7	9	12	15	18	23	28	34	40	48	57	68	82	

Table 3.11. Snapshot of Norms—Phonics & Word Recognition, Grade K

A

Percentile	Achievement Norm Score			Fall-Winter Cond. Growth		Winter Percentile and Score																			
	Fall	Winter	Spring	Mean	SD	5	10	15	20	25	30	35	40	45	50	55	60	65	70	75	80	85	90	95	
	5	478	480	483	5.7	4.9	26	46	60	71	79	85	89	93	95	97	98	99	99	99	99	99	99	99	99
10	480	483	486	5.5	4.9	16	32	46	58	67	75	81	86	90	93	95	97	98	99	99	99	99	99	99	99
15	482	485	488	5.3	4.9	8	20	32	43	53	62	70	76	82	86	90	93	95	97	98	99	99	99	99	99
20	483	486	490	5.2	4.9	6	16	26	36	46	55	63	70	77	82	86	90	93	96	97	99	99	99	99	99
25	484	488	491	5.0	4.9	4	12	20	30	39	48	56	64	71	77	82	87	91	94	96	98	99	99	99	99
30	485	489	492	4.9	4.9	3	8	16	24	32	41	49	57	64	71	77	82	87	91	94	97	98	99	99	99
35	486	490	494	4.8	4.9	2	6	12	19	26	34	42	50	57	64	71	77	83	88	92	95	97	99	99	99
40	486	491	495	4.8	4.9	2	6	12	19	26	34	42	50	57	64	71	77	83	88	92	95	97	99	99	99
45	487	492	496	4.7	4.9	1	4	9	14	20	27	35	42	50	57	65	72	78	84	89	93	96	98	99	99
50	488	493	497	4.6	4.9	1	3	6	10	16	22	28	35	43	50	58	65	72	79	85	90	94	97	99	99
55	489	494	498	4.5	4.9	1	2	4	8	12	17	23	29	36	43	51	58	66	73	80	86	92	96	99	99
60	490	495	499	4.4	4.9	1	1	3	5	9	13	17	23	29	36	43	51	59	67	74	82	89	94	98	98
65	490	495	500	4.4	4.9	1	1	3	5	9	13	17	23	29	36	43	51	59	67	74	82	89	94	98	98
70	491	497	501	4.3	4.9	1	1	2	4	6	9	13	18	23	30	36	44	52	60	68	77	85	92	97	97
75	492	498	502	4.2	4.9	1	1	1	2	4	7	10	14	18	24	30	37	44	53	62	71	80	89	96	96
80	493	499	504	4.1	4.9	1	1	1	2	3	5	7	10	14	18	24	30	37	46	54	64	74	85	94	94
85	494	500	505	4.0	4.9	1	1	1	1	2	3	5	7	10	14	19	24	31	38	47	57	68	80	92	92
90	496	502	508	3.8	4.9	1	1	1	1	1	2	3	5	7	10	14	19	26	33	43	54	68	85	95	95
95	498	505	511	3.5	4.9	1	1	1	1	1	1	1	1	2	4	5	8	11	15	21	29	40	55	75	75

B

Percentile	Achievement Norm Score			Winter-Spring Cond. Growth		Spring Percentile and Score																			
	Fall	Winter	Spring	Mean	SD	5	10	15	20	25	30	35	40	45	50	55	60	65	70	75	80	85	90	95	
	5	478	480	483	5.4	5	32	56	71	81	88	92	95	97	98	99	99	99	99	99	99	99	99	99	99
10	480	483	486	5.1	5	16	35	50	63	73	81	86	91	94	96	97	98	99	99	99	99	99	99	99	99
15	482	485	488	4.9	5	9	22	36	49	60	69	77	83	88	92	94	96	98	99	99	99	99	99	99	99
20	483	486	490	4.8	5	6	17	30	42	53	63	71	78	84	88	92	95	97	98	99	99	99	99	99	99
25	484	488	491	4.6	5	3	10	19	29	39	48	58	66	73	80	85	90	93	96	98	99	99	99	99	99
30	485	489	492	4.5	5	2	7	14	23	32	41	51	59	67	74	81	86	90	94	96	98	99	99	99	99
35	486	490	494	4.4	5	1	5	11	18	26	35	43	52	60	68	75	82	87	91	95	97	99	99	99	99
40	486	491	495	4.3	5	1	3	8	13	20	28	36	45	53	62	69	76	83	88	92	96	98	99	99	99
45	487	492	496	4.2	5	1	2	5	10	16	22	30	38	46	55	63	70	78	84	89	94	97	99	99	99
50	488	493	497	4.1	5	1	1	4	7	12	17	24	31	39	47	56	64	72	79	86	91	95	98	99	99
55	489	494	498	4.0	5	1	1	3	5	9	13	19	25	33	40	49	57	65	74	81	88	93	97	99	99
60	490	495	499	3.9	5	1	1	2	3	6	10	14	20	26	34	42	50	59	67	76	84	90	96	99	99
65	490	495	500	3.9	5	1	1	2	3	6	10	14	20	26	34	42	50	59	67	76	84	90	96	99	99
70	491	497	501	3.7	5	1	1	1	2	3	5	8	11	16	22	28	36	44	54	63	73	83	91	98	98
75	492	498	502	3.6	5	1	1	1	1	2	3	5	8	12	17	23	29	37	46	56	67	78	88	96	96
80	493	499	504	3.5	5	1	1	1	1	2	4	6	9	13	18	24	31	39	49	60	72	84	94	94	94
85	494	500	505	3.5	5	1	1	1	1	1	3	4	6	9	13	18	25	33	42	53	66	79	92	92	92
90	496	502	508	3.3	5	1	1	1	1	1	1	2	3	5	7	10	15	21	29	39	52	67	85	95	95
95	498	505	511	3.0	5	1	1	1	1	1	1	1	1	1	2	4	6	9	14	21	31	46	70	75	75

C

Percentile	Achievement Norm Score			Fall-Spring Cond. Growth		Spring Percentile and Score																			
	Fall	Winter	Spring	Mean	SD	5	10	15	20	25	30	35	40	45	50	55	60	65	70	75	80	85	90	95	
	5	478	480	483	11	6.8	19	34	45	54	62	69	75	80	84	87	90	93	95	96	98	99	99	99	99
10	480	483	486	10.6	6.8	14	26	36	45	54	61	67	73	78	82	86	89	92	94	96	97	99	99	99	99
15	482	485	488	10.1	6.8	9	19	28	37	45	52	59	65	70	75	80	84	88	91	93	96	98	99	99	99
20	483	486	490	9.9	6.8	8	16	24	32	40	47	54	60	66	72	77	81	85	89	92	95	97	98	99	99
25	484	488	491	9.7	6.8	6	13	21	28	36	43	50	56	62	68	73	78	82	86	90	93	96	98	99	99
30	485	489	492	9.5	6.8	5	11	18	25	32	38	45	51	58	64	69	74	79	84	88	92	95	97	99	99
35	486	490	494	9.2	6.8	4	9	15	21	28	34	41	47	53	59	65	71	76	81	85	90	93	96	99	99
40	486	491	495	9.2	6.8	4	9	15	21	28	34	41	47	53	59	65	71	76	81	85	90	93	96	99	99
45	487	492	496	9.0	6.8	3	7	13	18	24	30	36	42	49	55	61	67	72	78	83	87	92	95	98	98
50	488	493	497	8.8	6.8	2	6	10	15	21	26	32	38	44	50	56	62	68	74	80	85	90	94	98	98
55	489	494	498	8.6	6.8	2	5	8	13	18	23	28	34	40	46	52	58	64	70	76	82	88	93	97	97
60	490	495	499	8.3	6.8	1	4	7	11	15	19	24	30	35	41	47	53	60	66	73	79	85	91	96	96
65	490	495	500	8.3	6.8	1	4	7	11	15	19	24	30	35	41	47	53	60	66	73	79	85	91	96	96
70	491	497	501	8.1	6.8	1	3	5	9	12	16	21	26	31	37	43	49	55	62	69	76	82	89	95	95
75	492	498	502	7.9	6.8	1	2	4	7																

Table 3.12. Snapshot of Norms—Phonics & Word Recognition, Grade 1

A

Percentile	Achievement Norm Score			Fall-Winter Cond. Growth		Winter Percentile and Score																		
	Fall	Winter	Spring	Mean	SD	5	10	15	20	25	30	35	40	45	50	55	60	65	70	75	80	85	90	95
	5	484	488	491	6.3	4.7	29	55	72	82	89	93	96	98	99	99	99	99	99	99	99	99	99	99
10	487	491	494	5.8	4.7	14	34	52	66	76	84	89	93	96	97	99	99	99	99	99	99	99	99	99
15	489	493	496	5.5	4.7	8	22	38	52	64	74	81	87	91	94	97	98	99	99	99	99	99	99	99
20	491	495	497	5.1	4.7	4	13	25	38	50	61	70	78	84	89	93	96	97	99	99	99	99	99	99
25	492	496	499	5.0	4.7	3	10	20	32	43	54	64	72	80	86	90	94	96	98	99	99	99	99	99
30	493	497	500	4.8	4.7	2	7	16	26	36	47	57	66	74	81	87	91	94	97	98	99	99	99	99
35	495	499	501	4.4	4.7	1	4	9	16	24	33	43	53	62	70	78	84	89	93	96	98	99	99	99
40	496	500	502	4.3	4.7	1	2	6	12	19	27	36	46	55	64	72	79	86	91	94	97	99	99	99
45	497	501	503	4.1	4.7	1	2	4	9	15	22	30	39	48	57	66	74	81	87	92	96	98	99	99
50	498	502	504	3.9	4.7	1	1	3	6	11	17	24	32	41	50	59	68	76	83	89	94	97	99	99
55	499	503	505	3.7	4.7	1	1	2	4	8	13	19	26	34	43	52	61	70	78	86	91	96	99	99
60	500	504	506	3.6	4.7	1	1	1	3	6	10	15	21	28	36	45	55	64	73	81	88	94	98	99
65	501	505	507	3.4	4.7	1	1	1	2	4	7	11	16	23	30	38	48	57	67	76	85	92	97	99
70	503	506	508	3.0	4.7	1	1	1	1	2	3	6	9	13	19	26	34	43	53	64	75	85	93	98
75	504	508	509	2.9	4.7	1	1	1	1	1	2	4	6	10	15	21	28	36	46	57	69	80	90	96
80	505	509	511	2.7	4.7	1	1	1	1	1	1	3	5	7	11	16	22	30	39	50	62	75	87	98
85	507	511	512	2.3	4.7	1	1	1	1	1	1	1	2	4	6	9	13	19	27	36	48	62	78	92
90	509	513	514	2.0	4.7	1	1	1	1	1	1	1	1	2	3	4	7	11	16	24	35	49	66	86
95	512	516	517	1.5	4.7	1	1	1	1	1	1	1	1	1	1	1	2	4	7	11	18	29	45	71

B

Percentile	Achievement Norm Score			Winter-Spring Cond. Growth		Spring Percentile and Score																		
	Fall	Winter	Spring	Mean	SD	5	10	15	20	25	30	35	40	45	50	55	60	65	70	75	80	85	90	95
	5	484	488	491	4.9	4.3	31	57	74	84	91	95	97	98	99	99	99	99	99	99	99	99	99	99
10	487	491	494	4.3	4.3	14	35	53	67	78	85	91	94	96	98	99	99	99	99	99	99	99	99	99
15	489	493	496	3.9	4.3	8	23	39	53	65	75	83	88	92	95	97	98	99	99	99	99	99	99	99
20	491	495	497	3.5	4.3	4	13	25	38	51	62	71	79	86	90	94	96	98	99	99	99	99	99	99
25	492	496	499	3.3	4.3	2	9	20	31	43	55	65	74	81	87	91	94	97	98	99	99	99	99	99
30	493	497	500	3.1	4.3	1	7	15	25	36	47	58	67	75	82	88	92	95	97	99	99	99	99	99
35	495	499	501	2.7	4.3	1	3	8	15	23	33	43	53	62	71	78	85	90	94	97	98	99	99	99
40	496	500	502	2.5	4.3	1	2	6	11	18	26	36	45	55	64	73	80	86	91	95	97	99	99	99
45	497	501	503	2.3	4.3	1	1	4	8	14	21	29	38	47	57	66	74	82	88	93	96	98	99	99
50	498	502	504	2.1	4.3	1	1	2	5	10	16	23	31	40	49	59	68	76	84	90	94	97	99	99
55	499	503	505	1.9	4.3	1	1	2	4	7	12	18	25	33	42	51	61	70	79	86	92	96	99	99
60	500	504	506	1.7	4.3	1	1	1	2	5	8	13	19	27	35	44	54	63	73	81	89	94	98	99
65	501	505	507	1.5	4.3	1	1	1	2	3	6	10	15	21	28	37	46	56	66	76	85	92	97	99
70	503	506	508	1.3	4.3	1	1	1	1	2	4	7	11	16	22	30	39	49	59	70	80	88	95	99
75	504	508	509	1.0	4.3	1	1	1	1	1	2	3	5	9	13	18	26	34	44	56	68	80	90	98
80	505	509	511	1.0	4.3	1	1	1	1	1	2	4	6	9	14	20	28	37	48	61	74	86	96	99
85	507	511	512	1.0	4.3	1	1	1	1	1	1	2	3	5	7	11	17	24	34	46	60	77	92	99
90	509	513	514	1.0	4.3	1	1	1	1	1	1	1	1	2	3	6	9	14	21	32	46	64	85	99
95	512	516	517	1.0	4.3	1	1	1	1	1	1	1	1	1	1	2	3	5	9	15	25	42	68	99

C

Percentile	Achievement Norm Score			Fall-Spring Cond. Growth		Spring Percentile and Score																		
	Fall	Winter	Spring	Mean	SD	5	10	15	20	25	30	35	40	45	50	55	60	65	70	75	80	85	90	95
	5	484	488	491	10.6	5.6	24	43	57	68	76	82	87	91	93	95	97	98	99	99	99	99	99	99
10	487	491	494	9.6	5.6	15	30	43	54	64	71	78	83	87	91	93	95	97	98	99	99	99	99	99
15	489	493	496	9.0	5.6	10	22	34	45	54	63	70	76	82	86	90	93	95	97	98	99	99	99	99
20	491	495	497	8.3	5.6	6	16	26	35	45	53	61	68	75	80	85	89	92	95	97	98	99	99	99
25	492	496	499	8.0	5.6	5	13	22	31	40	49	57	64	71	76	82	86	90	93	96	97	99	99	99
30	493	497	500	7.7	5.6	4	11	19	27	35	44	52	59	66	73	78	83	88	91	94	97	98	99	99
35	495	499	501	7.0	5.6	2	7	13	20	27	35	42	50	57	64	71	77	82	87	91	94	97	99	99
40	496	500	502	6.7	5.6	2	5	11	17	23	30	38	45	52	60	66	73	79	84	89	93	96	98	99
45	497	501	503	6.3	5.6	1	4	9	14	20	26	33	40	48	55	62	69	75	81	86	91	95	98	99
50	498	502	504	6.0	5.6	1	3	7	11	17	23	29	36	43	50	57	64	71	78	84	89	93	97	99
55	499	503	505	5.7	5.6	1	3	5	9	14	19	25	31	38	45	53	60	67	74	80	86	92	96	99
60	500	504	506	5.3	5.6	1	2	4	7	11	16	21	27	34	41	48	55	63	70	77	84	90	95	98
65	501	505	507	5.0	5.6	1	1	3	6	9	13	18	24	30	36	43	50	58	66	73	80	87	93	98
70	503	506	508	4.3	5.6	1	1	2	4	6	9	12	17	22	28	34	41	48	56	65	73	82	90	96
75	504	508	509	4.0	5.6	1	1	1	3	5	7	10	14	19	24	30	36	44	52	60	69	78	87	95
80	505	509	511	3.7	5.6	1	1	1	2	4	6	8	12	15	20	26	32	39	47	56	65	75	85	94
85	507	511	512	3.0	5.6	1	1	1	1	2	3	5	8	10	14	19	24	30	38	46	56	66	78	90
90	509	513	514	2.3	5.6	1	1	1	1	1	2	3	5	7	9	13	17	22	29	37	46	57	70	86
95	512	516	517	1.3	5.6	1	1	1	1	1	1	1	2	3	5	7	10	13	18	24	32	43	57	76

Table 3.13. Snapshot of Norms—Phonics & Word Recognition, Grade 2

A

Percentile	Achievement Norm Score				Fall-Winter Cond. Growth		Winter Percentile and Score																		
	Fall	Winter	Spring	Mean	SD	5	10	15	20	25	30	35	40	45	50	55	60	65	70	75	80	85	90	95	
	5	491	493	494	3.9	3.7	29	57	75	85	92	95	98	99	99	99	99	99	99	99	99	99	99	99	99
10	493	496	497	3.6	3.7	16	39	59	73	83	89	93	96	98	99	99	99	99	99	99	99	99	99	99	
15	495	497	498	3.2	3.7	8	24	41	56	69	78	86	91	94	97	98	99	99	99	99	99	99	99	99	
20	497	499	500	2.9	3.7	3	12	25	39	52	63	73	81	87	92	95	97	98	99	99	99	99	99	99	
25	498	500	501	2.7	3.7	2	8	19	30	43	55	65	74	82	88	92	95	97	99	99	99	99	99	99	
30	499	501	502	2.5	3.7	1	5	13	23	34	46	57	67	75	83	88	92	96	98	99	99	99	99	99	
35	500	502	503	2.4	3.7	1	3	9	17	27	37	48	58	68	76	83	89	93	96	98	99	99	99	99	
40	501	503	504	2.2	3.7	1	2	6	12	20	29	39	49	59	69	77	84	90	94	97	98	99	99	99	
45	502	504	505	2.0	3.7	1	1	4	8	14	22	31	41	51	60	70	78	85	90	95	97	99	99	99	
50	503	505	506	1.8	3.7	1	1	2	5	10	16	24	32	42	52	61	71	79	86	92	96	98	99	99	
55	504	506	507	1.7	3.7	1	1	1	3	6	11	17	25	33	43	53	63	72	80	88	93	97	99	99	
60	505	507	507	1.5	3.7	1	1	1	2	4	7	12	18	26	34	44	54	64	74	82	90	95	98	99	
65	506	508	508	1.3	3.7	1	1	1	1	3	5	8	13	19	27	35	45	55	66	76	85	92	97	99	
70	507	509	509	1.1	3.7	1	1	1	1	1	3	5	9	14	20	27	36	47	57	69	79	89	95	99	
75	508	510	510	1.0	3.7	1	1	1	1	1	2	3	6	9	14	20	28	38	49	60	72	84	93	99	
80	510	511	512	1.0	3.7	1	1	1	1	1	1	1	1	2	4	6	10	15	22	32	43	56	70	85	96
85	511	513	513	1.0	3.7	1	1	1	1	1	1	1	1	2	4	7	11	16	24	34	47	62	79	94	
90	513	514	515	1.0	3.7	1	1	1	1	1	1	1	1	1	1	3	5	8	13	20	30	45	64	86	
95	516	517	517	1.0	3.7	1	1	1	1	1	1	1	1	1	1	1	2	3	6	12	21	38	66		

B

Percentile	Achievement Norm Score				Winter-Spring Cond. Growth		Spring Percentile and Score																	
	Fall	Winter	Spring	Mean	SD	5	10	15	20	25	30	35	40	45	50	55	60	65	70	75	80	85	90	95
	5	491	493	494	2.8	3.6	32	60	77	87	93	96	98	99	99	99	99	99	99	99	99	99	99	99
10	493	496	497	2.3	3.6	12	33	52	66	77	85	91	94	97	98	99	99	99	99	99	99	99	99	99
15	495	497	498	2.1	3.6	8	25	42	58	70	79	86	91	95	97	98	99	99	99	99	99	99	99	99
20	497	499	500	1.8	3.6	3	13	26	39	52	64	74	81	87	92	95	97	98	99	99	99	99	99	99
25	498	500	501	1.6	3.6	2	9	19	31	43	55	65	74	82	88	92	95	97	99	99	99	99	99	99
30	499	501	502	1.4	3.6	1	5	13	23	34	46	57	66	75	82	88	92	95	98	99	99	99	99	99
35	500	502	503	1.3	3.6	1	3	9	17	26	37	47	58	67	76	83	88	93	96	98	99	99	99	99
40	501	503	504	1.1	3.6	1	2	6	12	19	28	38	48	58	68	76	83	89	93	96	98	99	99	99
45	502	504	505	1.0	3.6	1	1	4	8	14	21	30	39	49	59	68	77	84	90	94	97	99	99	99
50	503	505	506	1.0	3.6	1	1	2	5	9	15	22	31	40	50	60	69	78	85	91	95	98	99	99
55	504	506	507	1.0	3.6	1	1	1	3	6	10	16	23	32	41	51	60	70	79	86	92	97	99	99
60	505	507	507	1.0	3.6	1	1	1	2	4	7	11	17	24	32	41	51	62	72	81	88	94	98	99
65	506	508	508	1.0	3.6	1	1	1	1	2	4	7	12	17	24	33	42	52	63	74	83	91	97	99
70	507	509	509	1.0	3.6	1	1	1	1	1	3	5	8	12	18	25	33	43	54	66	77	87	95	99
75	508	510	510	1.0	3.6	1	1	1	1	1	1	3	5	8	12	18	25	34	45	57	69	81	91	98
80	510	511	512	1.0	3.6	1	1	1	1	1	1	2	3	5	8	13	19	26	36	48	61	74	87	97
85	511	513	513	1.0	3.6	1	1	1	1	1	1	1	1	2	3	5	9	14	21	30	42	57	75	92
90	513	514	515	1.0	3.6	1	1	1	1	1	1	1	1	1	2	3	6	9	15	22	33	48	67	88
95	516	517	517	1.0	3.6	1	1	1	1	1	1	1	1	1	1	1	2	4	7	13	23	40	68	

C

Percentile	Achievement Norm Score				Fall-Spring Cond. Growth		Spring Percentile and Score																	
	Fall	Winter	Spring	Mean	SD	5	10	15	20	25	30	35	40	45	50	55	60	65	70	75	80	85	90	95
	5	491	493	494	6.0	4.4	26	48	63	74	82	88	92	94	96	98	99	99	99	99	99	99	99	99
10	493	496	497	5.4	4.4	17	35	50	63	72	80	85	90	93	95	97	98	99	99	99	99	99	99	99
15	495	497	498	4.9	4.4	10	24	37	50	60	69	77	83	87	91	94	96	98	99	99	99	99	99	99
20	497	499	500	4.3	4.4	5	15	26	37	47	57	65	73	79	85	89	92	95	97	98	99	99	99	99
25	498	500	501	4.0	4.4	4	11	21	31	41	50	59	67	74	80	85	90	93	96	97	99	99	99	99
30	499	501	502	3.7	4.4	3	9	16	25	35	44	53	61	69	75	81	86	90	94	96	98	99	99	99
35	500	502	503	3.4	4.4	2	6	13	20	29	37	46	55	63	70	77	82	87	91	95	97	99	99	99
40	501	503	504	3.2	4.4	1	4	10	16	23	31	40	48	56	64	71	78	84	89	93	96	98	99	99
45	502	504	505	2.9	4.4	1	3	7	12	19	26	34	42	50	58	65	73	79	85	90	94	97	99	99
50	503	505	506	2.6	4.4	1	2	5	9	15	21	28	35	43	51	59	67	74	81	87	92	96	98	99
55	504	506	507	2.3	4.4	1	1	4	7	11	16	23	29	37	45	53	61	69	76	83	89	94	97	99
60	505	507	507	2.0	4.4	1	1	3	5	8	13	18	24	31	38	46	54	63	71	78	85	91	96	99
65	506	508	508	1.7	4.4	1	1	2	4	6	10	14	19	25	32	40	48	56	65	73	81	89	95	99
70	507	509	509	1.4	4.4	1	1	1	2	4	7	11	15	20	27	34	41	50	59	68	77	85	92	98
75	508	510	510	1.2	4.4	1	1	1	2	3	5	8	12	16	21	28	35	43	52	62	71	81	90	97
80	510	511	512	1.0	4.4	1	1	1	1	1	3	4	6	9	13	18	24	31	39	49	59	71	83	94
85	511	513	513	1.0	4.4	1	1	1	1	1	2	3	5	7	10	14	19	25	33	42	53	65	78	91
90	513	514	515	1.0	4.4	1	1	1	1	1	1	2	3	5	8	11	16	22	30	40	52	67	85	
95	516	517	517	1.0	4.4	1	1	1	1	1	1	1	1	2	3	5	7	10	15	23	33	48	71	

Table 3.14. Snapshot of Norms—Phonics & Word Recognition, Grade 3

A

Percentile	Achievement Norm Score			Fall-Winter Cond. Growth		Winter Percentile and Score																			
	Fall	Winter	Spring	Mean	SD	5	10	15	20	25	30	35	40	45	50	55	60	65	70	75	80	85	90	95	
	496	497	498	2.4	3.1	38	67	83	91	95	98	99	99	99	99	99	99	99	99	99	99	99	99	99	99
5	495	496	497	2.4	3.1	38	67	83	91	95	98	99	99	99	99	99	99	99	99	99	99	99	99	99	99
10	498	499	499	1.9	3.1	13	35	55	70	80	88	93	96	98	99	99	99	99	99	99	99	99	99	99	99
15	499	500	501	1.8	3.1	8	25	44	59	72	81	88	93	96	98	99	99	99	99	99	99	99	99	99	99
20	501	502	502	1.5	3.1	3	11	24	38	51	63	73	81	88	92	95	97	99	99	99	99	99	99	99	99
25	502	503	503	1.4	3.1	1	7	16	28	40	52	63	73	81	87	92	95	97	99	99	99	99	99	99	99
30	503	504	504	1.3	3.1	1	4	10	19	30	41	53	63	73	80	87	92	95	97	99	99	99	99	99	99
35	504	504	505	1.1	3.1	1	2	6	13	21	31	42	52	63	72	80	86	92	95	98	99	99	99	99	99
40	504	505	506	1.1	3.1	1	2	6	13	21	31	42	52	63	72	80	86	92	95	98	99	99	99	99	99
45	505	506	506	1.0	3.1	1	1	3	8	14	22	31	41	52	62	71	80	86	92	95	98	99	99	99	99
50	506	507	507	1.0	3.1	1	1	2	4	9	15	22	31	41	51	61	71	79	87	92	96	98	99	99	99
55	507	508	508	1.0	3.1	1	1	1	2	5	9	15	22	31	40	50	61	71	80	87	93	97	99	99	99
60	508	509	509	1.0	3.1	1	1	1	1	3	5	9	15	22	30	39	50	60	71	81	89	95	98	99	99
65	509	509	510	1.0	3.1	1	1	1	1	1	3	6	9	14	21	29	39	50	61	72	82	91	97	99	99
70	509	510	510	1.0	3.1	1	1	1	1	1	3	6	9	14	21	29	39	50	61	72	82	91	97	99	99
75	510	511	511	1.0	3.1	1	1	1	1	1	2	3	6	9	14	21	29	39	50	62	74	85	94	99	99
80	512	512	512	1.0	3.1	1	1	1	1	1	1	1	2	3	5	9	13	20	29	40	54	69	84	96	99
85	513	514	514	1.0	3.1	1	1	1	1	1	1	1	1	2	3	5	8	13	20	30	43	59	76	93	99
90	514	515	515	1.0	3.1	1	1	1	1	1	1	1	1	1	1	3	5	8	13	21	32	48	67	88	99
95	517	517	518	1.0	3.1	1	1	1	1	1	1	1	1	1	1	1	1	1	3	5	10	19	35	64	99

B

Percentile	Achievement Norm Score			Winter-Spring Cond. Growth		Spring Percentile and Score																			
	Fall	Winter	Spring	Mean	SD	5	10	15	20	25	30	35	40	45	50	55	60	65	70	75	80	85	90	95	
	497	499	501	2.0	3.4	35	62	78	87	92	96	98	99	99	99	99	99	99	99	99	99	99	99	99	99
5	495	496	497	2.0	3.4	35	62	78	87	92	96	98	99	99	99	99	99	99	99	99	99	99	99	99	99
10	498	499	499	1.5	3.4	13	33	51	65	76	84	89	93	96	97	99	99	99	99	99	99	99	99	99	99
15	499	500	501	1.4	3.4	9	25	41	55	67	77	84	89	93	96	97	99	99	99	99	99	99	99	99	99
20	501	502	502	1.0	3.4	3	12	24	36	48	59	69	77	84	89	93	95	97	99	99	99	99	99	99	99
25	502	503	503	1.0	3.4	2	8	17	27	39	50	60	69	77	83	89	93	95	97	99	99	99	99	99	99
30	503	504	504	1.0	3.4	1	5	11	20	30	40	50	60	69	76	83	88	93	96	98	99	99	99	99	99
35	504	504	505	1.0	3.4	1	5	11	20	30	40	50	60	69	76	83	88	93	96	98	99	99	99	99	99
40	504	505	506	1.0	3.4	1	3	7	14	22	31	40	50	60	68	76	83	88	93	96	98	99	99	99	99
45	505	506	506	1.0	3.4	1	2	4	9	15	23	31	40	50	59	68	76	83	89	93	96	99	99	99	99
50	506	507	507	1.0	3.4	1	1	3	6	10	16	23	31	40	49	59	68	76	83	89	94	97	99	99	99
55	507	508	508	1.0	3.4	1	1	1	3	6	11	16	23	31	40	49	58	68	76	84	90	95	98	99	99
60	508	509	509	1.0	3.4	1	1	1	2	4	7	11	16	23	31	39	49	58	68	77	86	92	97	99	99
65	509	509	510	1.0	3.4	1	1	1	2	4	7	11	16	23	31	39	49	58	68	77	86	92	97	99	99
70	509	510	510	1.0	3.4	1	1	1	1	2	4	7	11	16	22	30	39	48	59	69	79	88	95	99	99
75	510	511	511	1.0	3.4	1	1	1	1	1	2	4	7	11	16	22	30	39	49	60	71	82	92	98	99
80	512	512	512	1.0	3.4	1	1	1	1	1	1	2	4	7	11	16	22	30	39	50	63	75	87	97	99
85	513	514	514	1.0	3.4	1	1	1	1	1	1	1	1	1	2	4	7	10	15	22	31	43	58	74	91
90	514	515	515	1.0	3.4	1	1	1	1	1	1	1	1	1	1	2	4	7	10	16	23	34	48	66	86
95	517	517	518	1.0	3.4	1	1	1	1	1	1	1	1	1	1	1	2	4	7	11	18	29	46	72	99

C

Percentile	Achievement Norm Score			Fall-Spring Cond. Growth		Spring Percentile and Score																			
	Fall	Winter	Spring	Mean	SD	5	10	15	20	25	30	35	40	45	50	55	60	65	70	75	80	85	90	95	
	497	499	501	3.5	3.8	33	56	71	81	88	92	95	97	98	99	99	99	99	99	99	99	99	99	99	99
5	495	496	497	3.5	3.8	33	56	71	81	88	92	95	97	98	99	99	99	99	99	99	99	99	99	99	99
10	498	499	499	2.8	3.8	14	32	48	61	71	79	85	90	93	95	97	98	99	99	99	99	99	99	99	99
15	499	500	501	2.6	3.8	10	25	40	53	63	72	80	85	90	93	95	97	98	99	99	99	99	99	99	99
20	501	502	502	2.2	3.8	5	14	25	36	47	57	66	74	80	86	90	93	96	97	99	99	99	99	99	99
25	502	503	503	1.9	3.8	3	10	19	29	39	49	58	67	74	80	86	90	93	96	98	99	99	99	99	99
30	503	504	504	1.7	3.8	2	7	14	22	31	41	50	59	67	74	80	86	90	94	96	98	99	99	99	99
35	504	504	505	1.5	3.8	1	4	10	17	24	33	42	50	59	67	74	81	86	91	94	97	99	99	99	99
40	504	505	506	1.5	3.8	1	4	10	17	24	33	42	50	59	67	74	81	86	91	94	97	99	99	99	99
45	505	506	506	1.3	3.8	1	3	7	12	18	26	34	42	51	59	67	74	81	87	91	95	98	99	99	99
50	506	507	507	1.1	3.8	1	2	4	8	13	20	27	34	42	51	59	67	75	82	88	92	96	99	99	99
55	507	508	508	1.0	3.8	1	1	3	6	9	14	20	27	35	43	51	59	68	76	83	89	94	98	99	99
60	508	509	509	1.0	3.8	1	1	2	4	6	10	15	21	27	35	43	51	60	69	77	85	91	96	99	99
65	509	509	510	1.0	3.8	1	1	1	2	4	7	11	15	21	27	35	43	52	61	70	79	87	94	98	99
70	509	510	510	1.0	3.8	1	1	1	2	4	7	11	15	21	27	35	43	52	61	70	79	87	94	98	99
75	510	511	511	1.0	3.8	1	1	1	1	3	5	7	11	15	21	27	35	44	53	63	73	82	91	97	99
80	512	512	512	1.0	3.8	1	1	1	1	1	2	3	5	8	11	16	21	28	37	46	57	70	82	94	99
85	513	514	514	1.0	3.8	1	1	1	1	1	1	2	3	5	8	11	16	22	29	38	49	62	76	91	99
90	514	515	515	1.0	3.8	1	1	1	1	1	1	1	1	2	3	5	8	11	16	22	31	41			

4. Conclusion and Discussion

This report describes the norming procedure used to develop the grades K–3 achievement and growth user norms for the three domains assessed in Foundational Skills on the Spanish MAP Reading Fluency assessment: Phonological Awareness, Phonics & Word Recognition, and Language Comprehension. It also provides snapshots of the norms and guidance on how to interpret them. These norms offer useful context for schools, educators, and parents to understand student performance at a particular point in time as well as growth over time relative to peers in the norming sample, thereby supporting more informed evaluation of student outcomes. The norms are scheduled for release in 2026.

A few months after the Spanish MAP Reading Fluency assessment was introduced in Fall 2019, the COVID-19 pandemic significantly disrupted education worldwide. During the second half of the 2019–2020 school year, many schools transitioned to remote learning or temporarily closed, resulting in extremely low test volumes in Spring 2020. Although testing resumed afterward, the pandemic had a clear and lasting impact on student learning. Overall performance declined, and students who were already struggling tended to fall further behind their peers (Kuhfeld et al., 2022; Lewis et al., 2021).

As a result, this norming study uses data from three school years—2019–2020, 2020–2021, and 2021–2022—capturing both pre-pandemic and concurrent pandemic periods. Due to differences in test volumes across years, the resulting norms are weighed more heavily toward pandemic-era performance, which reflects lower overall achievement compared with pre-pandemic levels. NWEA believes this provides a more accurate and relevant representation of current student performance.

At the same time, users should be mindful of the limitations in generalizing findings from this report. Decisions such as student placement or instructional planning should not rely solely on normative data. Instead, normative information should be considered alongside other evidence of student performance and growth.

Test scores alone have limited meaning without appropriate context. NWEA remains committed to providing that context through robust and regularly updated achievement and growth norms. As schools and students continue to recover from pandemic-related disruptions, NWEA will continue to monitor performance trends in the Spanish MAP Reading Fluency assessment and update these norms as more representative data become available.

References

- Kuhfeld, M., Soland, J., Lewis, K., & Morton, E. (2022). *The pandemic has had devastating impacts on learning. What will it take to help students catch up?* Brown Center Chalkboard, Brookings. <https://www.brookings.edu/blog/brown-center-chalkboard/2022/03/03/the-pandemic-has-had-devastating-impacts-on-learning-what-will-it-take-to-help-students-catch-up/>
- Lewis, K., Kuhfeld, M., Ruzek, E., & McEachin, A. (2021). *Learning during COVID-19: Reading and math achievement in the 2020–21 school year*. NWEA. <https://www.nwea.org/content/uploads/2021/07/Learning-during-COVID-19-Reading-and-math-achievement-in-the-2020-2021-school-year.research-brief-1.pdf>
- Thum, Y. M., & He, W. (2019). *Achievement and growth norms for course-specific MAP Growth Algebra 1, Geometry, and Algebra 2 tests*. NWEA Research Report. NWEA. <https://www.nwea.org/uploads/2021/06/2019-MAP-Growth-HS-Math-Norms-Report-FINAL.pdf>