



**map** GROWTH

K-2



One reliable solution

**nwea**

# A comprehensive assessment solution for early reading and math

Get essential data for making critical decisions with the most precise and flexible K-2 assessment solution available. Whether you're tracking student growth, determining placement, or identifying and addressing skill gaps with seamlessly connected instruction, MAP® Growth™ K-2 provides detailed insights for moving students forward.

## With MAP Growth K-2 you can:

### 1. Precisely measure growth and achievement

MAP Growth drives more decisions in more districts for more students than any other assessment. It adapts and continuously adjusts to each student, providing a precise picture of every young learner's growth and achievement in math and reading.

### 2. Make targeted placement decisions

Quickly determine placement for a new student who's in the earliest stages of learning, particularly a kindergarten or pre-K student, with accurate baseline information on foundational skills.

### 3. Assess mastery of foundational skills

Get a clear picture of which skills students have mastered and areas where they have gaps with skills checklists that use a targeted skill-by-skill format to focus on early mathematics and learning-to-read concepts.

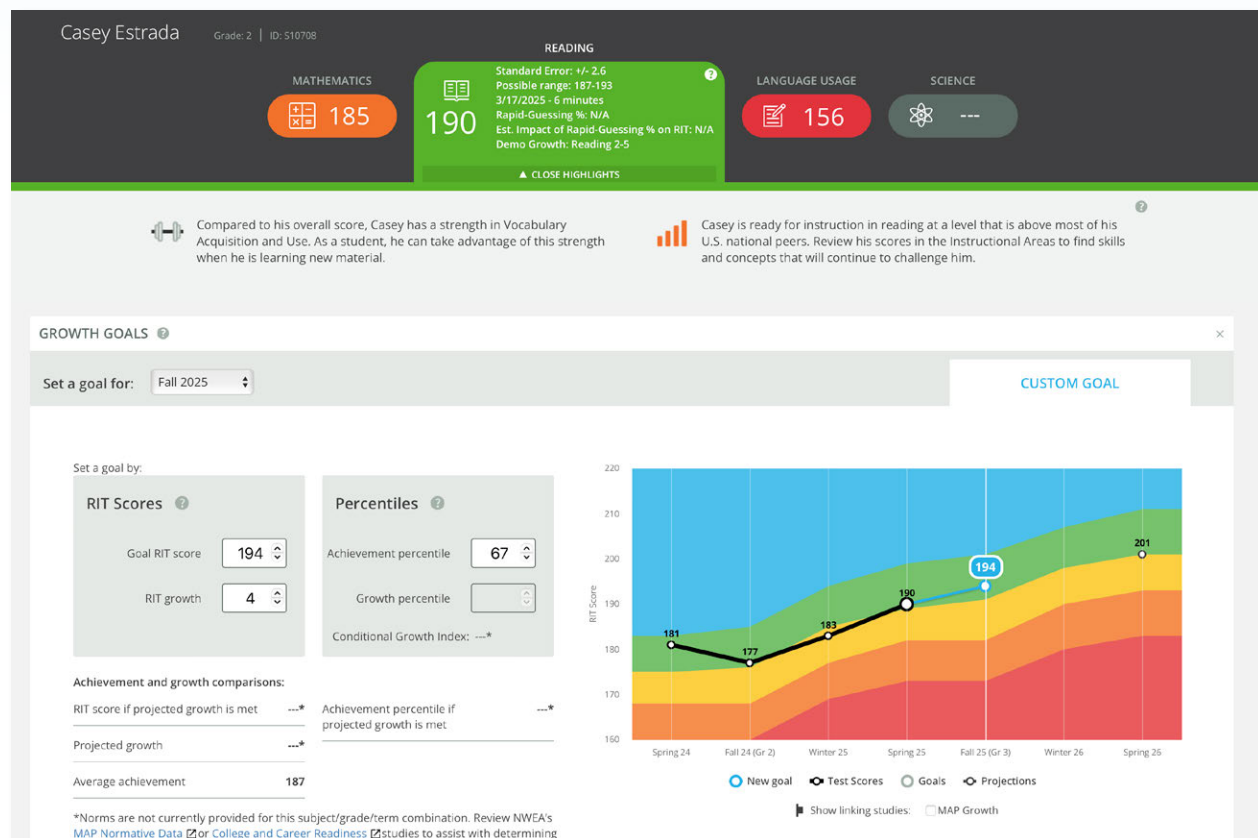


# Precisely measure growth and achievement with MAP Growth

Meet every K-2 student where they are: on, above, or below grade level.

- MAP Growth is ideal for universal screening, progress monitoring, and longitudinal tracking
- Quickly set goals and track growth from year to year for every student and building with the intuitive RIT scale
- See exactly where students stand in relation to their peers with industry-leading norms drawn from the world's largest pool of student data

## Student Profile report: Set growth goals and monitor progress



# Turn MAP Growth insights into results with HMH Personalized Path and 30+ instructional connections

## Assessment-driven practice and intervention

HMH Personalized Path seamlessly connects MAP Growth with Read 180, Math 180, and Waggle on a single platform. Whether they need intensive intervention or adaptive practice to push their learning further, students are precisely placed into tailored learning paths based on their MAP Growth scores.

## Connect MAP Growth data with 30+ personalized learning programs

You can also connect with the learning tools you already know and use. When you share MAP Growth data with any of the products below, you can quickly and easily create learning paths for each student without additional placement assessments.

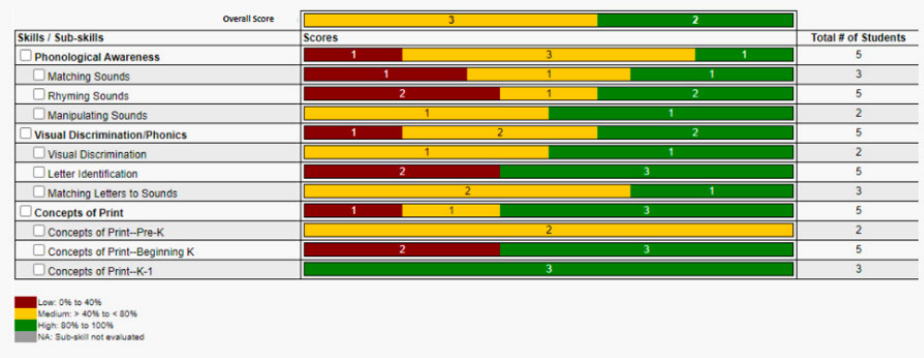


# Make targeted placement decisions with screening tests

Quickly identify appropriate placement for incoming K-2 students.

- Get a clear picture of early literacy and numeracy (phonological awareness, number sense, concepts of print, etc.)
- Reports guide grouping and tiered support

**Screening Test report: Place students based on their prior knowledge and skills mastery**

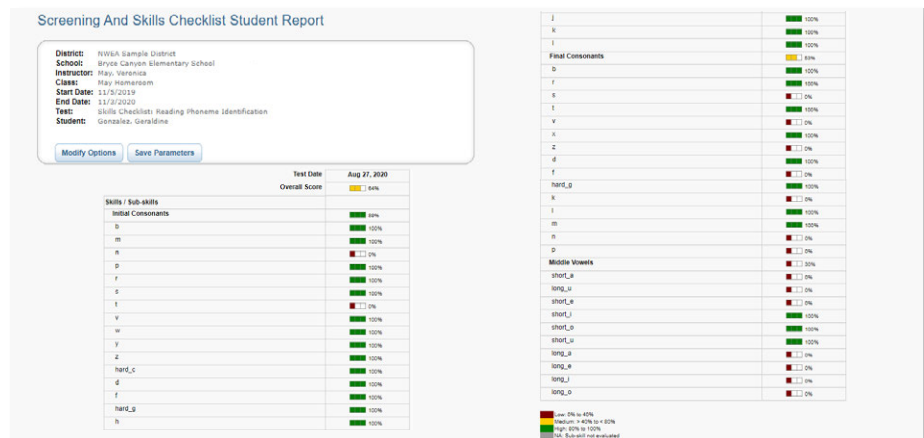


## Assess mastery of foundational skills with skills checklists

Target instruction by zooming in on individual reading and math skills.

- Assess 30+ foundational reading and math areas (e.g., blends, CVCe words, counting, operations)
- Use before or after instruction to check mastery
- Clearly presented results support tracking of individual skill development plus skill-based grouping and MTSS/RTI

**Skills checklist: Quickly assess foundational skills mastery and target instruction to address skills gaps**



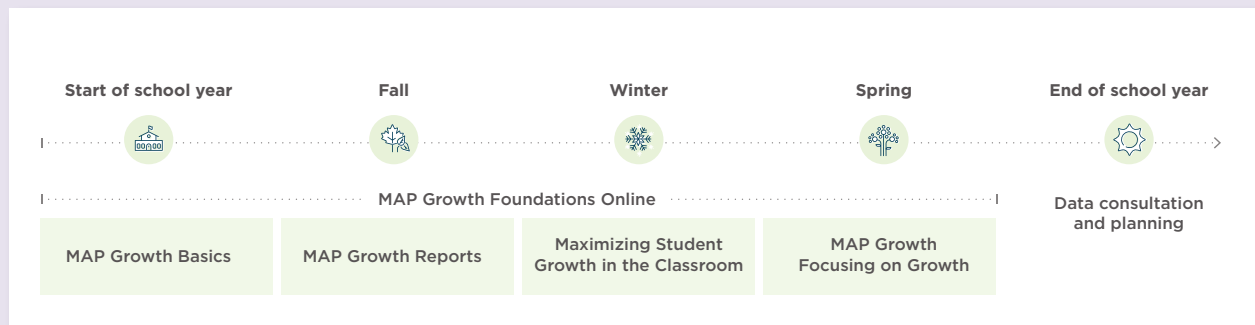


# MAP Growth Professional Learning grows with you

NWEA® Professional Learning for MAP Growth K-2 is built on a foundation of more than four decades of assessment literacy leadership and proven best practices. It is designed to support you at every stage of your MAP implementation and instructional cycle. Our role-based and customized professional learning equips you with the expertise for making the most of your MAP data through accurate assessment, astute analysis, and informed instructional action.

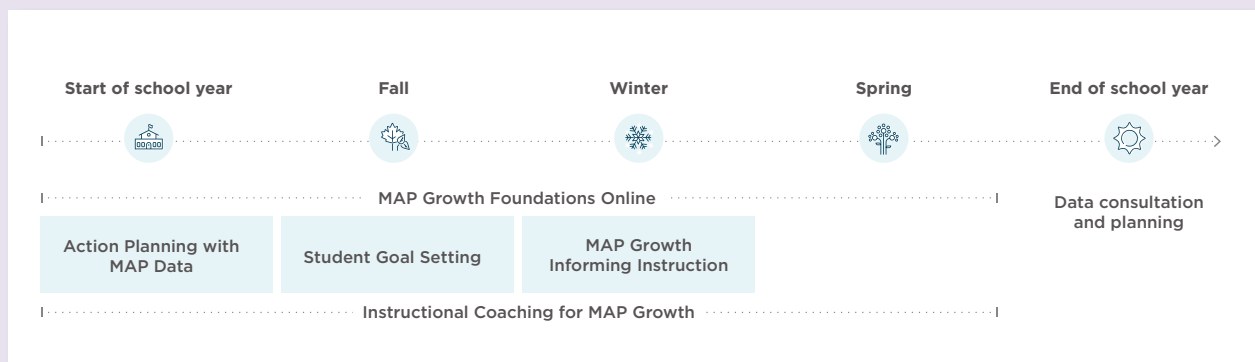
## Year one: Start strong with MAP Growth

Get the knowledge and tools staff across your school or district need to administer assessments, analyze reports, and act on data with the Foundations Online course.



## Year two: Maximize MAP Growth impact and application

Utilize the responsive planning process to address student needs and meet your school and district goals.



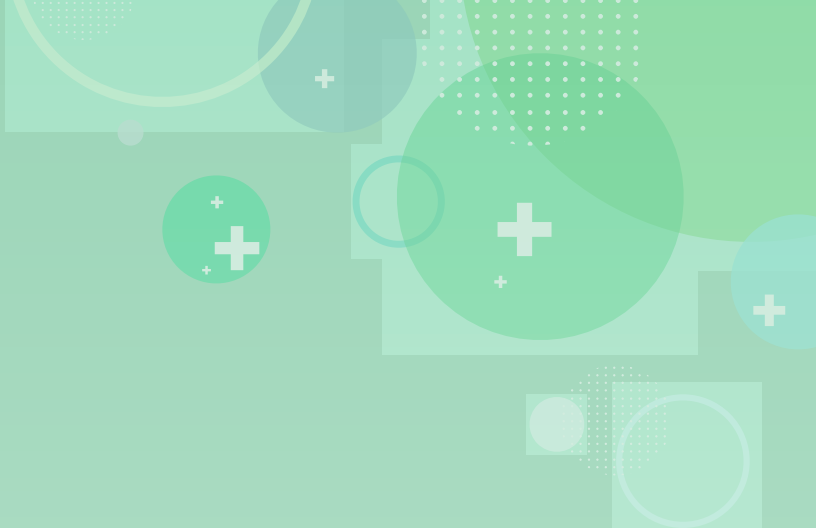


## Leadership services

The Center for Model Schools, in partnership with NWEA, helps MAP Growth districts turn data into meaningful, lasting improvements starting in the early grades. Through our exclusive collaboration with the University of Chicago, we bring the research-backed 5Essentials® Framework and Survey—meeting ESSA Tier II evidence standards—into K-2 classrooms to strengthen instructional leadership, school culture, and data-driven decision-making.

For early learners, this means:

- Equip leaders with tools to drive lasting, evidence-based growth focused on early literacy
- Help teachers use MAP Growth data to personalize instruction and build young learners' confidence
- Strengthen collaboration among early-grade educators for consistent, aligned instruction
- Create safe, nurturing, and rigorous learning environments where students and teachers thrive



NWEA®, a division of HMH, supports students and educators worldwide by providing assessment solutions, insightful reports, professional learning offerings, and research services. Visit [NWEA.org](https://www.nwea.org) to find out how NWEA can partner with you to help all kids learn.

©2025 HMH Education Company. HMH, NWEA, and MAP are registered trademarks, and MAP Growth is a trademark, of HMH Education Company in the US and in other countries. All rights reserved. The names of other companies and their products mentioned are the trademarked of their respective owners. The 5Essentials is a registered trademark owned by The University of Chicago. © 2021 University of Chicago.

MAY25 | NWEA\_WF2260751