



**nwea** Professional Learning

# Connecting learning to practice with NWEA Instructional Coaching

Impactful learning experiences rely on the effective use of data.

---

**NWEA® Instructional Coaching** goes beyond **MAP® Reading Fluency™** data interpretation; it enhances educator assessment literacy, translating complex data into practical and impactful instructional strategies.

## WHY EDUCATORS CHOOSE NWEA'S INSTRUCTIONAL COACHING

- Grounded in peer-reviewed research and evidence-based practices that enhance teaching effectiveness
- Customized through a collaborative approach
- Supported by certified coaches to help navigate educational changes confidently



# Centered around research, action, and reflection

Guided by the NWEA coaching tenets, instructional coaches engage participants in research-based inquiry, action, and reflection using data to support best practices and equitable instruction.

## NWEA Instructional Coaching tenets

Our tenets provide the autonomy to prioritize your professional growth through tailored support and resources, ensuring you have the autonomy to achieve your educational goals.

The coaching cycle leverages insights from MAP Reading Fluency and comprehensive support strategies to enhance teaching practices through practical, relevant experiences, and fosters a culture of shared growth and continuous improvement.



**AGENCY**



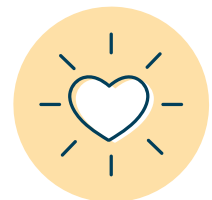
**PARTNERSHIP**



**EQUITY**



**ACTION**



**TRUST**

## Coaching cycles that support sustained growth

### **Inquiry**

Encourages educators to ask critical questions and explore data, forming the basis for informed strategies.

### **Action**

Translates insights into practical, classroom-ready techniques.

### **Reflection**

Allows educators to assess the effectiveness of their actions, fostering continuous improvement.



## Personalized development at any career stage

Available as onsite learning or virtual sessions, ensure that educators and coaches are equipped to excel. Each instructional coaching session is grounded in research-backed practices and provides educators with MAP Reading Fluency data tools, insights and support necessary for improved instructional practices.

### **NEW EDUCATOR**

Topics include MAP Reading Fluency data analysis and:

- Utilization for instructional planning
- Classroom management
- Content planning
- Formative assessment
- Instructional practices

### **EXPERIENCED EDUCATOR**

Topics include MAP Reading Fluency data analysis and:

- Supporting multiple instructional methods
- Promoting instructional equity
- Goal setting
- Leadership and teaching practices
- Observation and practice analysis

### **LEARNING STRATEGISTS AND COACHES**

Topics include MAP Reading Fluency data analysis and:

- Leading PLCs
- Understanding adult learners
- Effective communication skills
- Peer coaching/role playing
- Enhancing coaching capacity

---

Contact your account executive to learn more about NWEA Instructional Coaching or visit [nwea.org/instructional-coaching-for-teachers](https://nwea.org/instructional-coaching-for-teachers)



NWEA®, a division of HMH, supports students and educators worldwide by providing assessment solutions, insightful reports, professional learning offerings, and research services. Visit [NWEA.org](https://nwea.org) to find out how NWEA can partner with you to help all kids learn.

© 2024 Houghton Mifflin Harcourt. NWEA and MAP are registered trademarks, and MAP Reading Fluency and MAP Growth are trademarks, of Houghton Mifflin Harcourt in the US and in other countries.

SEP24 | WELTSK7854