

nwea

Professional Learning

Responsive Literacy Practices

Level up literacy instruction

Our content-focused professional learning offerings for literacy communicate essential findings from reading science to inform practical classroom applications. We work alongside educators to empower them with the foundational theory, practical demonstrations, and actionable tools they need to level up their teaching with the science of reading. The Responsive Literacy Practices suite:

- Fosters ambitious and equitable instructional practices by building teachers' literacy expertise and pedagogical content knowledge
- Provides methods and strategies that work with any curriculum—focusing on effective teaching and learning in literacy independent of any assessment or curriculum
- Translates peer-reviewed research studies into efficient and explicit teaching and learning strategies to help all kids learn to be fluent readers and effective writers
- Improves instructional decision-making, with a focus on responsive teaching and learning, by honing developing teacher expertise in the science of literacy instruction

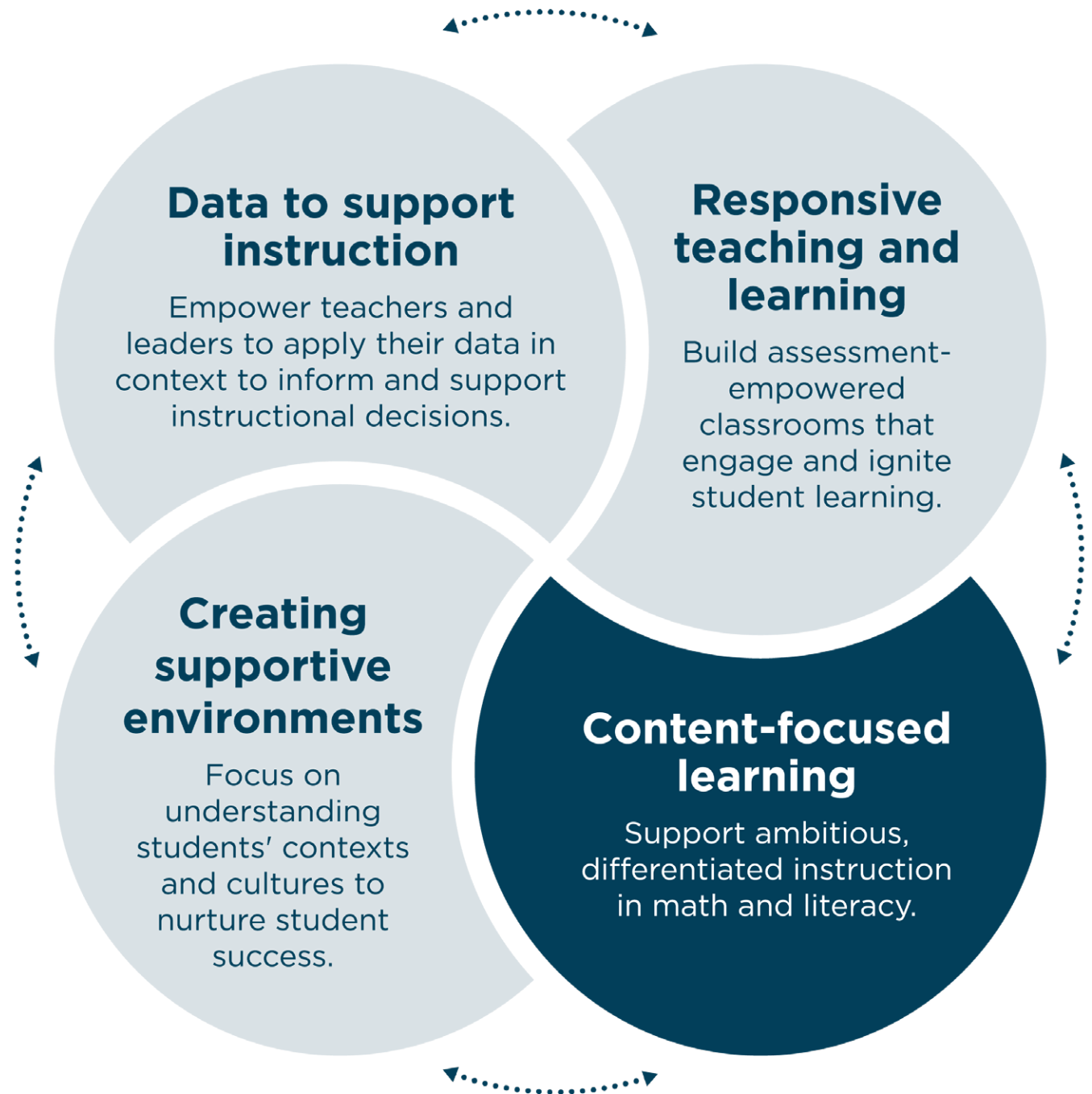


Professional learning that drives instructional change

Teachers demand and deserve the opportunity to grow, learn, and develop as professionals. NWEA® Professional Learning engages teachers in collaborative conversations that foster the high-quality, ambitious instruction that improves student outcomes.

We develop professional practice in the four critical, interconnected categories that help educators make the most instructional impact.

The Responsive Literacy Practices professional learning suite is part of the Content Focused Learning series.



Available offerings

Shift from problematic to promising practice with the converging evidence from reading science by supporting teachers in deepening their understanding of how students learn to read and write. Participants will leave with best-practice teaching and learning strategies and practical resources to use in their classroom tomorrow.

GRADES K-8

Guided by the shifts: Literacy

Beginning with a solid understanding of today's college- and career-ready standards will equip you with essential knowledge for your instructional practice. In this foundational three-hour session, you'll gain a deep understanding of the key characteristics of college and career readiness for literacy, how those characteristics progress across grades, and the development of a classroom culture that supports discourse and builds a culturally responsive environment. (3 hours)

- What are the characteristics of college- and career-ready standards in English language arts (ELA)?
- How does reading complex text support equitable instructional practices?
- Why are evidence-rich tasks essential for college and career readiness?
- What kinds of knowledge demands do our students experience in ELA?

Foundations of writing

Developing young writers is an essential component of providing equitable and excellent literacy instruction. Writing empowers students to generate knowledge, communicate ideas, and expand their thinking. This three-hour offering lays the groundwork for understanding how writing happens, what writers need to grow, and why writing is essential for every content area, every grade, and the development of a classroom culture that supports discourse and builds a culturally responsive environment. (3 hours)



Available offerings

GRADES K-2

Understanding how students learn to read

Our brains are wired to learn spoken language, but students begin to form novel connections between speech and print as they learn to read. We can support all students' reading success by teaching reading through methods that align with how the brain acquires, processes, and retains language, letters, and sounds. In this six-hour offering, you'll gain insight into how students learn to read in English, the elements of print reading, and how to implement instructional practices supported by research on the science of reading.

PART 1 (3 hours)

- How does skilled reading develop?
- What models from research help us understand how we learn to read?
- What are the essential elements of a structured literacy approach?

PART 2 (3 hours)

- How do we leverage multilingual knowledge for students learning to read?
- Why can learning to read be challenging for students?
- What is the current state of reading, and where do we go from here?

Early word recognition

Deepen pedagogical content knowledge for early literacy instruction grounded in the converging evidence in science of reading research. This six-hour offering helps K-2 educators implement effective literacy instruction through accessible classroom- and evidence-based practices for a sounds-first approach.

PART 1 (3 hours)

- How do sounds in the English language relate to letter names?
- How can I teach the relationship between speech and print?
- How can I teach hard words in ways that make them stick?

PART 2 (3 hours)

- How do I choose and use text purposefully?
- How do I design and deliver phonics lessons?
- How do I support early readers with responsive learning practices?

Building fluent readers

Fluency is a bridge between students' decoding of connected text and determining meaning. Designed for K-2 elementary teachers, reading specialists, instructional coaches, and principals, this six-hour offering provides time to learn strategies aligned to the science of reading. These strategies will help increase your students' fluency, advance your pedagogical content knowledge by analyzing reading fluency components, and examine the variables affecting reading fluency.

PART 1 (3 hours)

- What is reading fluency?
- What variables impact reading fluency?

PART 2 (3 hours)

- What are responsive teaching practices used for fluency development?
- How can the formative assessment cycle support planning for reading fluency development?

Power up your professional learning with these additional services:

Want to deepen the learning with additional time and space for application and practice?

Instructional coaching for teachers

Continue the learning from any of our offerings by adding collaborative coaching. A highly qualified thought partner and practitioner will lead teachers through an inquiry-based coaching cycle to deliver a highly responsive and contextualized experience that takes the learning from theory to practice, using evidence-based and research-driven methods to build teacher capacity, efficacy, and instructional skill.

Want to measure the impact of professional learning on teaching effectiveness and student learning?

Learning and evaluation services

This set of tailored tools and services measures the impact of professional learning on participants, school systems, and students. Beginning with a comprehensive needs assessment, our evaluation services are fully integrated with the planning and delivery of your professional learning to ensure the unique learning needs of your district are being met.



Make meaningful, measurable
instructional change.

Discover more at [NWEA.org/professional-learning](https://www.nwea.org/professional-learning) or by
contacting us at 866.654.3246.



NWEA is a mission-driven organization that supports students and educators worldwide by providing assessment solutions, insightful reports, professional learning offerings, and research services. Visit [NWEA.org](https://www.nwea.org) to find out how NWEA can partner with you to help all kids learn.

© 2023 NWEA. NWEA is a registered trademark of NWEA in the US and in other countries.

The names of other companies and their products mentioned are the trademarks of their respective owners.

MAR23 | WELTSK5360

