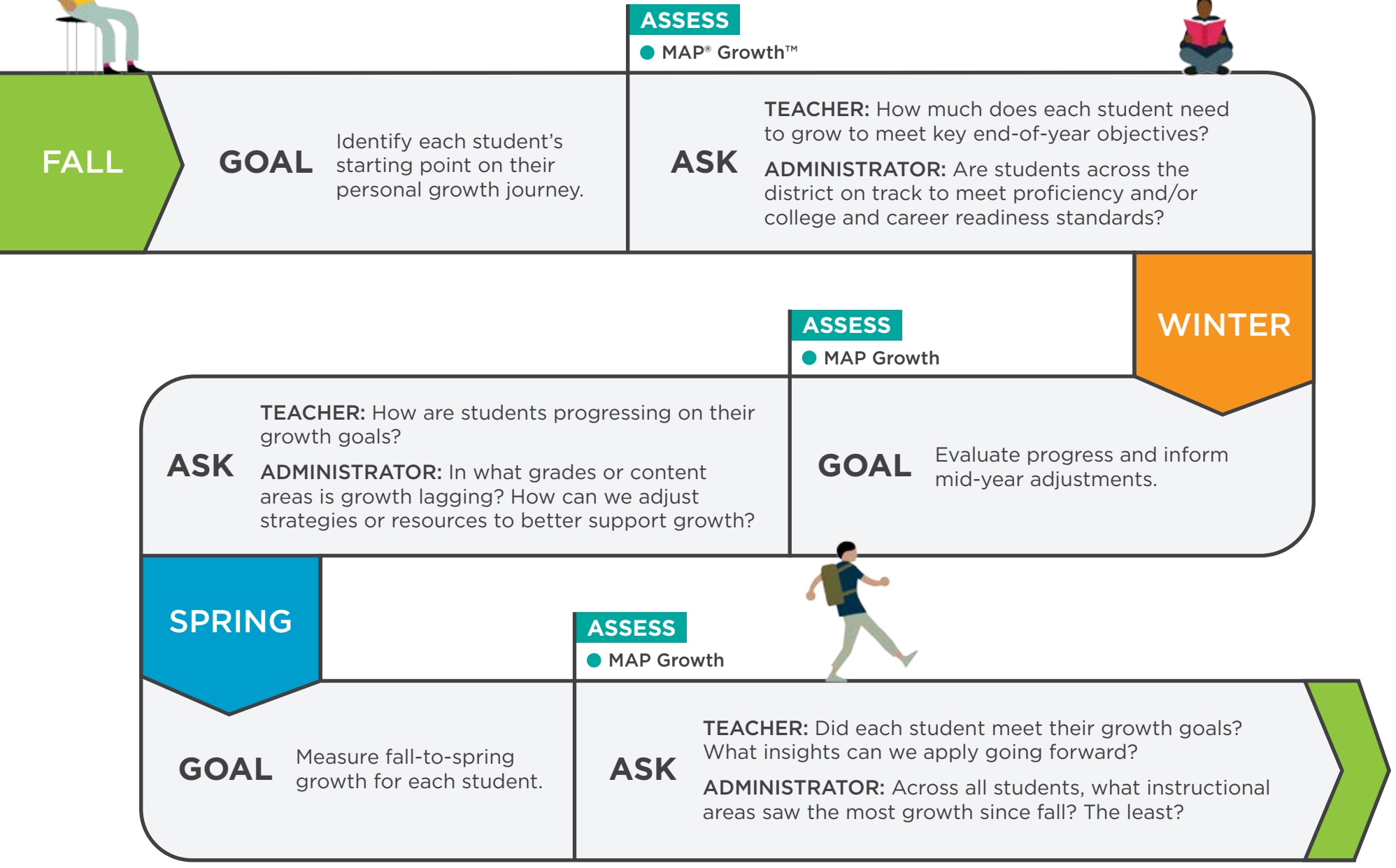


YOUR ROADMAP TO... Student growth

Guide student growth all year long with the MAP® Suite.



KEY RESOURCES



NORMATIVE DATA
Compare student growth and achievement to a nationally representative sample.



LINKING STUDIES
Reliably project performance on upcoming state assessments—as well as the ACT® and SAT®.



COLLEGE EXPLORER
See if students are on track to enter their college of choice.

NEXT STEPS

FALL	WINTER	SPRING
<p>ANALYZE Student Profile Report Class Report</p> <p>ACT Work with each student to set individual goals. Use NWEA® growth norms and proficiency projections for context.</p> <p>SHARE Share each student's goals with their families, along with growth areas to focus on at home.</p> <p>ADVISE Schedule a <i>Student Goal Setting and Growth</i> professional learning workshop and help teachers set smart goals.</p>	<p>ANALYZE Achievement Status and Growth Report</p> <p>ACT Update goals for students who have already met their fall goals. Evaluate strategies for struggling students.</p> <p>SHARE Discuss student progress with families. Consider mid-year adjustments in PLCs.</p> <p>ADVISE Consider coaching opportunities or supplementary instructional support for teachers with students falling short on their goals.</p>	<p>ANALYZE Achievement Status and Growth Report Student Growth Summary Report</p> <p>ACT Review growth with students and celebrate their successes. Reflect on what worked best and plan for next year.</p> <p>SHARE Review school and district growth reports with your school board to show what's working and analyze opportunities for improvement.</p> <p>ADVISE Enhance school improvement planning with a <i>District and School Goal-Setting</i> professional learning workshop.</p>



Learn how the MAP Suite supports student growth at [NWEA.org/the-map-suite](https://www.nwea.org/the-map-suite)